

PROTECTION



UNIA



uniamachines.com

UNIA-Pilmet sprayers result from over 65-years of experience in constructing of plant protection machines for modern agriculture. The simplicity of construction, efficient and durable liquid systems, durable membrane-piston pumps and stable field beams ensure precise spraying and maximum efficiency while operation.





24
MONTHS
WARRANTY

TABLE OF CONTENTS

EKO / LUX	4
REX	5
PLUS STANDARD	6
PLUS REX	7
EUROPA	8
EUROPA XL	9
EUROPA PREMIUM	10
CONTROLLERS	11
LIQUID SYSTEM	12



UNIA Catalogue

Edition: July 2018

UNIA hereby reserves the right to introduce changes in the offer, especially to withdraw products from sale or change specifications without prior notice.

The colours on the pictures may slightly differ from those available in reality.

The weight of the machines is stated in KG, the power in HP, the length in CM.

EKO / LUX

The smallest mounted sprayers of EKO and LUX series are characterised by operational simplicity with an extension option. The EKO series is equipped with a manually folded/unfolded field beam. In the LUX series the field beam is fully controlled hydraulically. The sprayers can be equipped with solenoid valve that improves the sprayer operation comfort with an option of UNIA SPRAY controller application.

EKO

HOPPER CAPACITY [l]	WORKING WIDTH [m]
600 / 800 / 1000	12 / 15 / 18 (EKO 1000)

Hopper

Durable and aesthetic hopper with a large inlet opening

Liquid system

made of acid-resistant pipes
– available as an option

Beam self-locking system

facilitates the beam unfolding

Liquid system

in the standard option made of acid-resistant pipes

3-chamber hopper

made of polyethylene that ensures high smoothness inside the hopper

Spraying beam

folded and lifted manually (hydraulic lifting option)

Field beam

folded and unfolded hydraulically; lifted hydraulically up to 2.1 metre

Independent beam

with an option of 1/4 width unfolding

LUX

HOPPER CAPACITY [l]	WORKING WIDTH [m]
400 / 600 / 800 / 1000	12 / 15

LUX 1015



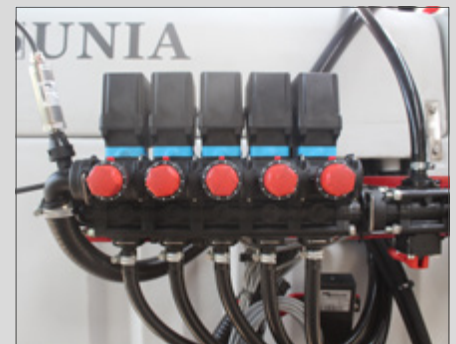
Independent beam

The application of such a beam highly facilitates spraying on the fields with numerous obstacles (posts, trees). The width reduction enables the application of a different technological path span within narrow plots.



Front tank TOP 1200

It enables increasing the LUX and REX capacity up to 2400 l. Hydraulic or electric pump drive available.



Solenoid valve

An easy operation of the liquid system from the tractor cabin with an option of UNIA SPRAY controller application.

REX

HOPPER CAPACITY [l]	WORKING WIDTH [m]
1000 / 1200	15 / 18 / 20 / 21 / 24

REX

Mounted sprayers of REX series are characterised by a compact structure that allows installing a large capacity hopper. REX sprayers are perfectly suitable for various users due to high efficiency and simple operation. The sprayers are equipped with 3-chamber polyethylene hoppers. The field beam is folded hydraulically into individual sequences, which enables obtaining very small drive width.

Reliable frame construction

of REX sprayers guarantees resistance in difficult working conditions

Spatial beam construction

made of bent profiles that make the entire structure highly rigid



Side diluter

located within the sprayer outline

Beam pendulous stabilization system

with shock absorption efficiently reduces shock transferred to the beam and enables its hydraulic inclination on the slopes

Transport

Safe driving on the roads due to small transport width

REX 1221



In transport position

the width is only 2.55 m, which ensures safe driving on public roads.



Field beam of REX type

is fully automatically folded and unfolded.



Front tank TOP 1200

enables increasing the LUX and REX capacity up to 2400 l; hydraulic or electric pump drive available.



PLUS STANDARD

The sprayers of PLUS series available in several models of hopper capacity from 1200 to 2500 litres and the beam width from 15 to 24 metres. In PLUS STANDARD series there are sprayers designed for small and medium farms.

PLUS STANDARD

HOPPER CAPACITY [l]	WORKING WIDTH [m]
1200 / 1500 / 1600	15 / 18
2000 / 2500	15 / 18 / 20 / 21 / 24

Beam pendulous stabilization system

with shock absorption efficiently reduces shock transferred to the beam and enables its hydraulic inclination on the slopes

2-chamber hoppers
are equipped with internal breakwaters and swirl washers

Diluter

easily operated due to clearly described functions; located on the left side of the sprayer



Pneumatic brake system

installed as a standard option in models with hoppers of 2000 and 2500 litres capacity

Stepless trace spacing option:

from 1.35 to 1.8 m for 1600
from 1.50 to 2.0 m for 2000 and 2500

PLUS 2018 with STANDARD beam



Independent beam

The application of such a beam largely facilitates spraying on the fields with numerous obstacles (posts, trees).



Beam inclination cylinder

It is assembled in standard option; it enables the adjustment of the beam inclination angle towards the ground.



Mudguards

They provide the protection of the sprayer control elements against dirt, adjusted depending on the tyre size.

PLUS REX

HOPPER CAPACITY [l]	WORKING WIDTH [m]
2000 / 2500	15 / 18 / 20 / 21 / 24

PLUS REX

The sprayers of PLUS series available in several models of hopper capacity from 1200 to 2500 litres and the beam width from 15 to 24 metres. PLUS sprayers are well-known among the farmers.

2-chamber hoppers

are equipped with internal breakwaters and swirl washers

REX BEAM

with an independent sequential unfolding and a beam inclination cylinder enables partial beam side folding in the full range of beam lifting up to 2.3 m

Beam

In the transport position the beam is folded in compact mode behind the basic machine in order to make the transport width of 2.40 m

Transport

Very small transport width ensures the safety in transport



PLUS 2518 with REX beam



Semi-automatic tracking drawbar enables driving the sprayer along the tractor wheel traces. The trace copying is possible due to two sensors and a chain mechanism.



Tyres Tyres are one of the crucial factors during work in order to protect soil. In PLUS sprayers it is possible to install tyres of 270/95 R42 size.



Mechanical axle shock absorption It improves driving comfort and extends the lifetime of the sprayer. The vibration transferred to the structure of the entire sprayer during the field work and transport is largely reduced.



EUROPA

Semi-mounted EUROPA models are a cheaper choice for medium and large agricultural companies searching for simple but efficient machines. Sprayers are composed of top quality components. EUROPA is equipped with a flat beam that is obliquely folded by the machine side. Simple equipment and comfortable operation are main features of EUROPA sprayers.

EUROPA

HOPPER CAPACITY [l]	WORKING WIDTH [m]
2500 / 3000 / 4000	18 / 20 / 21 / 24 / 27 / 28

Hopper

integrated with internal clean water tank ensures the machine stability

Filtration system

sectional filters on the beam that separate the finest impurities



Membrane-piston pump

of increased membrane resistance

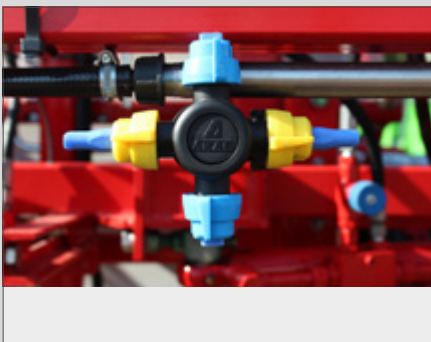
Operation

Main service valves are situated in a visible sprayer part

Field beam

of a flat construction with a liquid system based on acid-resistant pipes

EUROPA 3024



Optional equipment

4-position heads with a set of sprayers available as an option.



Diluter

Diluter of 45 l capacity for thinning the materials used for the plant protection, equipped with two nozzles for precise washing working liquid from hopper walls and a nozzle for packaging washing.



External washer

It is safe and easy device for the operator and the natural environment used for washing of the sprayer directly at the field.

EUROPA XL

HOPPER CAPACITY [l]	WORKING WIDTH [m]
2500 / 3000 / 4000	18 / 20 / 21 / 24 / 27 / 28 / 30

EUROPA XL

Semi-mounted EUROPA XL models are constructed of top quality components. The sprayers are characterised by a compact structure, very small width and transport height not exceeding 2.9 m. An easy operation and uncomplicated construction facilitates the operation and reduces the maintenance time.

Maintenance platform

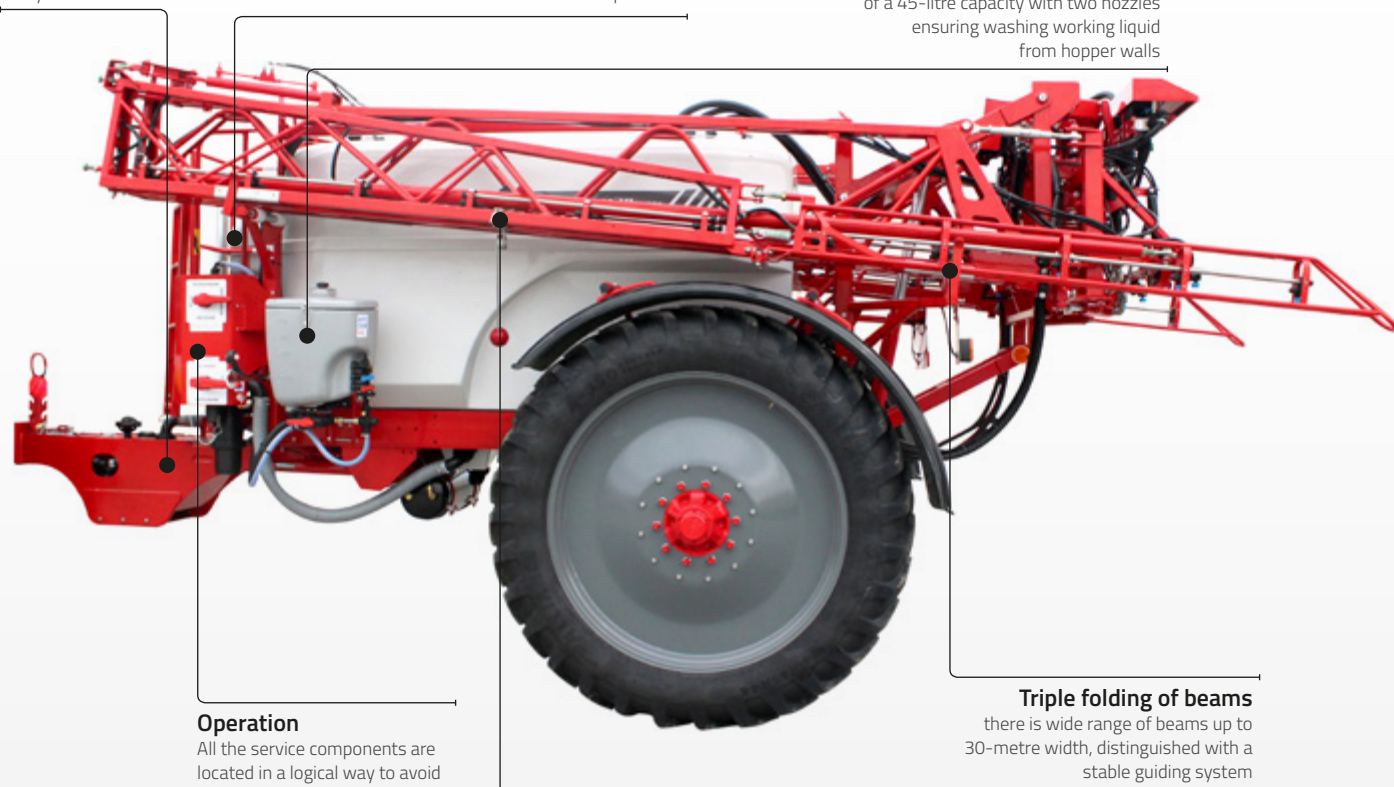
of a large surface of 0.66 m² with an easy access to the hatch

Dry liquid level indicator

convenient for liquid filling and during the field operation

Diluter

of a 45-litre capacity with two nozzles ensuring washing working liquid from hopper walls



Operation

All the service components are located in a logical way to avoid the risk of mistake

Field beam

of a spatial construction, distinguished with high rigidity of the entire structure

Triple folding of beams

there is wide range of beams up to 30-metre width, distinguished with a stable guiding system

EUROPA XL 3021



Automatic turnable drawbar

It significantly reduces the kneading during driving in and out of the technological path. Tractor wheel track copying is made by means of a gyroscope. The drawbar can be operated automatically or manually with a joystick.



Working width reduction

In the standard option: 30/20 m, 28/20 m, 27/21 m or 19 m, and 24/18 m. The width reduction enables a non-standard technological path usage at smaller fields.



Distance control

It enables automatic keeping of the beam set height over the field, improves the accuracy and evenness of spraying at the same time reducing the blowing away the liquid by means of automatic inclination control and beam height while it's operating.



EUROPA PREMIUM

The PREMIUM series sprayers are the largest machines designed for the largest professional agricultural companies. Due to a wide range of optional equipment, the EUROPA PREMIUM sprayers can be universally configured, from a simplest machine to the most technologically advanced equipment taking advantage of the latest spraying technology solutions.

EUROPA PREMIUM

HOPPER CAPACITY [l]	WORKING WIDTH [m]
4200 / 5800	24 / 27 / 28 / 30 / 36

Pump

Optionally, two integrated membrane-piston pumps of 520 l/minute capacity can be installed

Compact structure

of the sprayer ensures easy transport on various types of roads

Spatial construction beam

made of bent profiles that make the entire structure highly rigid

Liquid circulation system

ensures reaching the required liquid pressure in all nozzles from the moment when spraying is switched on.

Pneumatic axle shock absorption

installed in standard option reduces vibration transferred to the sprayer construction

Edge nozzles

prevent spraying the plant protection liquid over the field boundaries

EUROPA PREMIUM 4024



Automatically controlled turnable axle

It ensures precise sprayer tracking along the tractor wheels.



Two hoppers located symmetrically on the machine sides

For clean water, 300-litre capacity each, ensure even sprayer load distribution and lower the machine centre of gravity.



Pneumatic axle shock absorption

Installed in a standard option, highly improves driving comfort and extends the lifetime of the sprayer. The vibration transferred to the structure of the entire sprayer during the field work and transport is largely reduced.

CONTROLLERS



Controller UNIA SPRAY

is a fully automated unit for the sprayer operation, with a fully integrated control panel. Central, sectional and liquid adjustment valves can be triggered from the tractor cabin. It is possible to control max. 9 sections. The controller enables beam unfolding and levelling as well as semi-automatic drawbar control. The operator determines the spraying dose and, with a flow gauge and flow-rate sensor, the controller controls the sprayed liquid rate per hectare regardless of the drive speed.

EKO, LUX, REX, PLUS, EUROPA, EUROPA XL, EUROPA PREMIUM



Controller NAVI GPS

can be easily connected to the NAVI-GPS terminal and the Section-Control Box panel. The set also includes an antenna for free EGNOS signal reception (the accuracy of 10 – 30 cm). The set enables automatic switch on/off of the nozzles section situated on the field beam so as to reduce the double spraying as much as possible. Functions related to the spraying parameters set-up are passed to the NAVI-GPS terminal, while the hydraulic system control is still executed by means of the UNIA SPRAY switches.

LUX, REX, PLUS, EUROPA, EUROPA XL



UNIA TERMINAL SYSTEM (UTS)

is a state-of-the-art versatile terminal operating in the ISOBUS standard. It can be applied for the control of numerous machines that meet specific requirements, e.g. fertilizers. The UTS offers all the functions required to control the sprayers. The controller can be connected to a satellite receiver for parallel driving systems (TRACK-Leader II) and to the satellite section (SECTION-Control) and individual nozzles (EDS) switch off. In the standard option, JOYSTICK with 3 switches is provided for full control.

PLUS, EUROPA, EUROPA XL, EUROPA PREMIUM



TOUCH 800

is an ISOBUS terminal of the latest generation. The controller is equipped with a colourful touchscreen protected with a protective film. Via the terminal, it is possible to control all the sprayer functions: the liquid system, the beam hydraulics, the drawbar or turnable axle as well as GPS systems: parallel driving systems (TRACK-Leader II), section (SECTION-Control) and individual nozzles (EDS) control. After work is finished, it is possible to upload all the data onto a USB memory stick. The unit is able to display even two functions at the same time. TOUCH 800 can be extended with Track-Leader Auto – an automatic drive option.

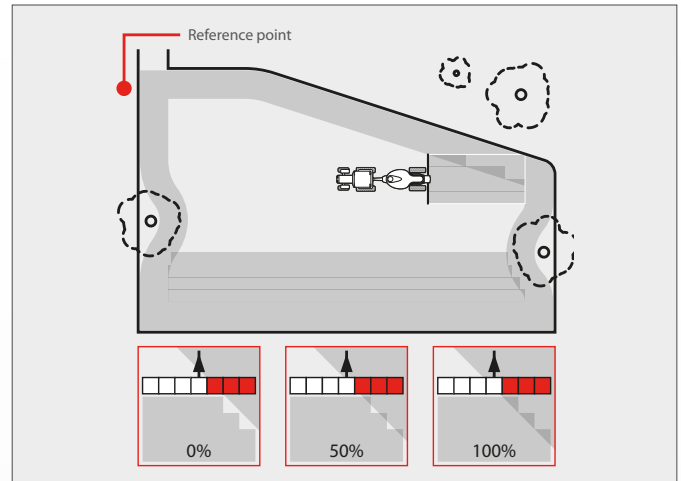
EUROPA XL, EUROPA PREMIUM



LIQUID SYSTEM

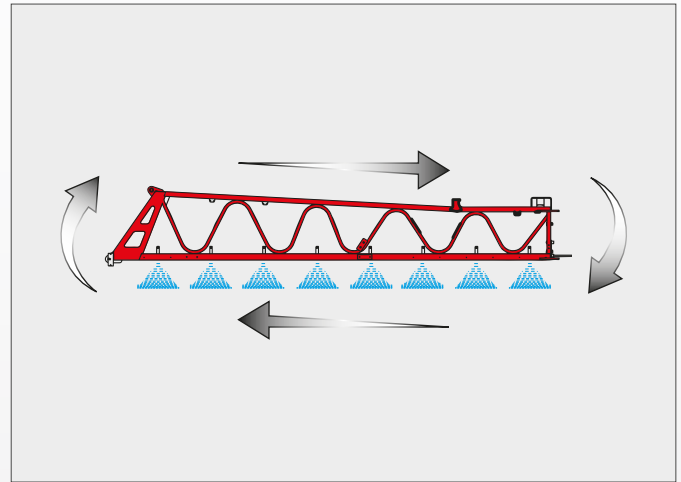
SECTION CONTROL

The automatic control of sections based on the GPS signal is available in all the manufactured sprayers. The SECTION CONTROL system takes over full control over the beam sections, switching them on/off automatically when the sprayer accesses/leaves the determined areas. It enables to lower the costs of plant protection materials due to a significant reduction of overlays and bypasses. Depending on the requirements, it is possible to set various levels of the spraying overlays. In order to fight the weed and parasite growth, it is recommended to set 100% spraying coverage.



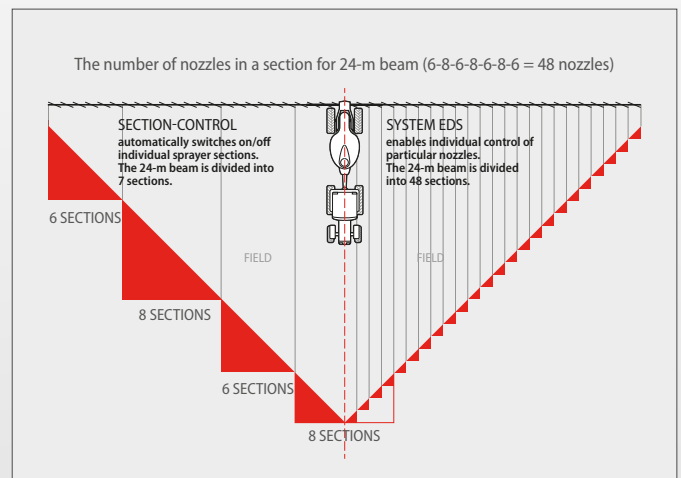
LIQUID CIRCULATION SYSTEM

The liquid circulation system ensures reaching the required liquid pressure in all the sprayers from the moment when spraying operation is switched on. The pressure is always even for the entire system and spraying can be started at any time, avoiding the problem of uneven pressure distribution from the central to the outer parts of the field beam. During the circulation, the working liquid circulates in the liquid system, and thus, the chemical material never remains still in the pipes and no sediment is formed.



INDIVIDUAL NOZZLES CONTROL EDS

The advantage of the EDS System is even more precise section control with the precision up to a single nozzle based on the GPS signal. Depending on the field shape, EDS allows for savings of c. 15% as compared to traditional section control. In sprayers equipped with the EDS system, the field beam is equipped with a working liquid circulation system, which enables constant and even working liquid mixing in the pipes. Due to the pressure circulation system all the nozzles are ready for use at all the working width at any time.

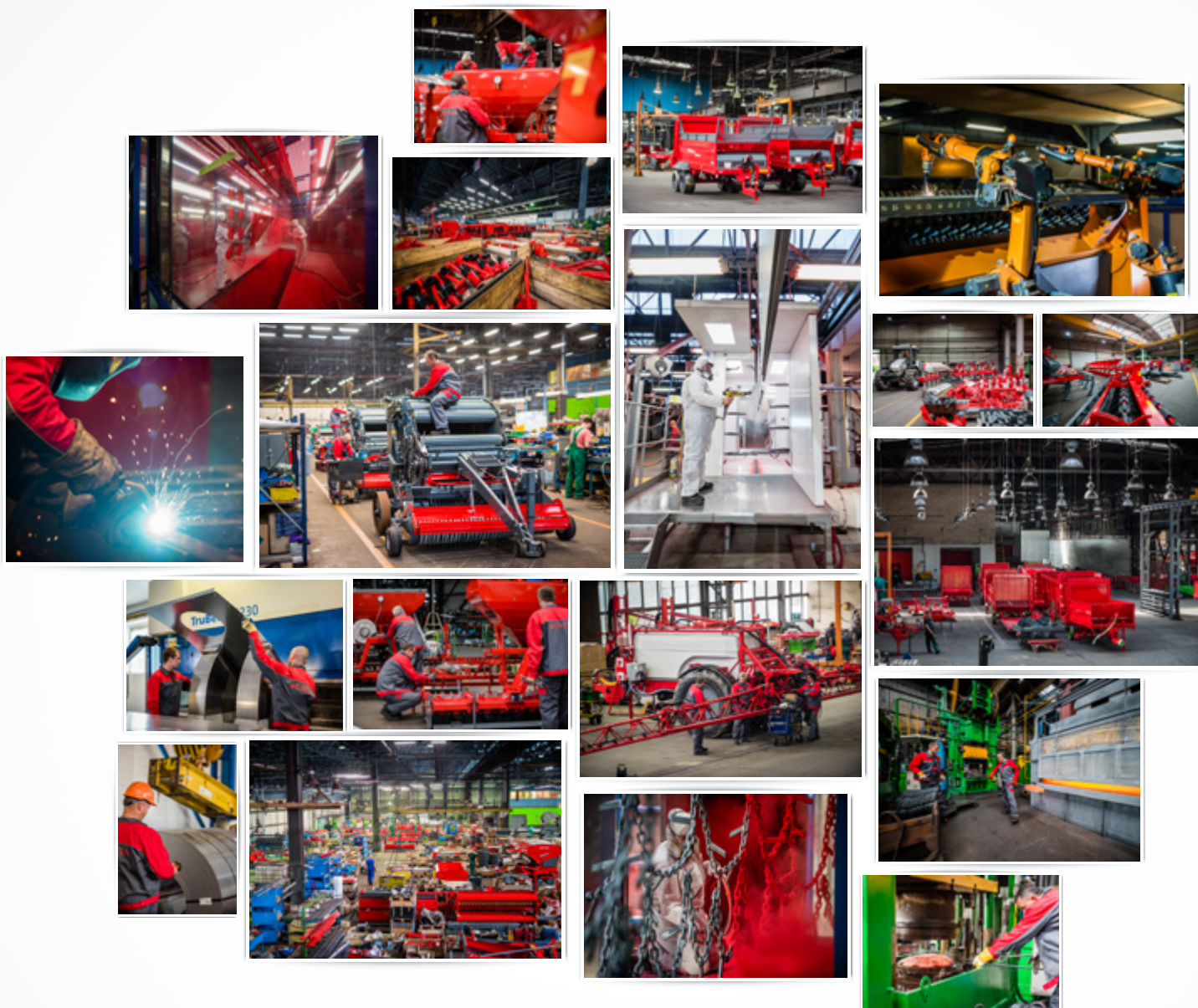








UNIA



Unia Sp. z o.o.

ul. Szosa Toruńska 32/38

86-300 Grudziądz

export@uniamachines.com

DEALER