

KSM-Maskinservice ApS

KATALOG

2021/2022



Ny udstillingshal og et stort værksted med tilhørende lager



KSM-Maskinservice er importør af flere spændende mærker, og forhandler kvalitetsprodukter fra flere highend producenter som engcon tiltrotator, BEMA koste og Sjørring skovle. Derudover sælger vi mange andre produkter og sliddele.

KSM har eksisteret i mange år og det er i dag 5. generation der leder virksomheden. Frederik Bergholdt er i dag ejer og leder af virksomheden, som tæller 10 ansatte.

KSM er importør af mærker som italienske OSA nedbrydningsudstyr og tyrkiske Hidromek entreprenørmaskiner, Bomford landskabspleje, samt Modularis og Vreten skovbrugsvogne.

Med en ny udstillingshal, et stort værksted med lager og 4 servicebiler kan **KSM-Maskinservice** tilbyde kvalitetsudstyr og service til alle entreprenører og nedbrydnings-firmaer.

Kataloget indeholder de mærker og produkter som vi sælger mest af, til vores kunder i Danmark.

Kontakt os for mere information på:

Henrik Bergholdt

+45 5166 6070
henrik@ksm-gruppen.com

Jens Overgaard

+45 4014 9947
jens@ksm-gruppen.com

Frederik Bergholdt

+45 2449 2444
frederik@ksm-gruppen.com



ENGINE

Model	: ISUZU AJ-4J1X
Type	: Water cooled, 4 cycle, 4 cylinders, line type direct injection, turbocharger, intercooler, electronic diesel engine
Power	: 98 HP (73 kW) @2000 rpm / SAE J1995 (Gross) : 95 HP (70,9 kW) @2000 rpm / SAE J1349 (Net)
Max. Torque	: 385 Nm @1600 rpm (Gross) : 378 Nm @1600 rpm (Net)
Displacement	: 2999 cc
Bore and Stroke	: 95,4 mm x 104,9 mm
Emission Class	: Stage IIIA / Tier 3 (EU/EPA)

UNDERCARRIAGE

X Type Lower Frame Construction Pentagon Box Type Chassis	
Shoe	: Triple grouser - 500 mm
No. Of Shoes	: 2 x 46
No. Of Lower Rollers	: 2 x 7
No. Of Upper Rollers	: 2 x 2
Track Tensioning	: Hydraulic Spring Tensioning
Dozer Blade (Optional)	

CAB

- Improved operator's all round visibility
- Increased cabin internal space
- Use of six viscomount cabin mountings that dampen the vibrations
- High capacity A/C
- High resolution, led backlight, color LCD display
- Opera Control System
- Cooled storage room
- Glass holder, book and object storage pockets
- Pool type floor mat
- Improved operator's comfort through versatile adjustable seat
- Ergonomically redesigned cabin through relocated switch board, and re-styled travel pedals and joysticks.

TRAVEL AND BRAKERS

Travel	: Fully hydrostatic
Travel Motors	: Axial piston type
Reduction	: 2 stage planetary gear
Travel Speed	
High Speed	: 5,6 km/h
Low Speed	: 3,3 km/h
Max. Drawbar Pull	: 11.600 kgf
Gradeability	: 35° (%70)
Parking Brake	: Hydraulic multi disc type
Ground Pressure	: 0,44 kgf/cm ²

LUBRICATION

Centralized lubrication system is provided for lubrication all difficult-to-reach parts on the components, such as boom and arm

HYDRAULIC SYSTEM

Main Pump	
Type	: Double variable displacement axial piston pumps
Max. Flow	: 2 x 129 L/min
Pilot Pump	: Gear, 20 L/min
Relief Valves	
Attachment	: 350 kgf/cm ²
Power Boost	: 372 kgf/cm ²
Travel	: 350 kgf/cm ²
Swing	: 260 kgf/cm ²
Pilot	: 40 kgf/cm ²
Cylinders	
Main Boom	: 2 x ø 105 x 75 x 1.080 mm
Stick Cylinder	: 1 x ø 115 x 80 x 1.225 mm
Bucket Cylinder	: 1 x ø 95 x 70 x 910 mm

OPERA CONTROL SYSTEM

- Easy-to-use control panel and menus
- Overheat prevention and protection system without interrupting the work
- Automatical electric power-off
- Maximum efficiency by selection of power and work modes
- Error mode registry and warning system
- Improved fuel economy and productivity
- Automatic idling Selection of multi-language on control panel
- Rear-view, arm-view camera (Optional)
- Possibility to register 27 different operating hours
- Anti-theft system with personal code
- Real time monitoring of operational parameters such as pressure, temperature, engine load

SWING SYSTEM

Swing Motor	: Axial piston type integrated with shock absorber valves
Reduction	: 2 stage planetary gear box.
Swing Brakes	: Hydraulic multi disc type, automatic warnings
Swing Speed	: 11,1 rpm

CAPACITY

Fuel Tank	: 280 L	Engine Oil	: 16 L
Hydraulic Tank	: 115 L	Radiator	: 20 L
Hydraulic System	: 210 L		

ELECTRICAL SYSTEM

Voltage	: 24V
Battery	: 2 x 12V x 100 Ah
Alternator	: 24V / 50 A
Starting Motor	: 24V / 4 kW

OPERATING WEIGHT

Standard machine operating weight	: 14.800 kg
-----------------------------------	-------------

Operational weight, complying with the ISO 6016 standards, includes full fuel tank, hydraulic system and other liquids, 75 kg operator weight and standard equipped machine weight. Optional equipments are not included.



ENGINE

Model	: ISUZU-4JJ1X
Type	: Water cooled, 4 cycle, 4 cylinders, line type direct injection, turbocharger, electronic diesel engine
Power	: 105 HP (78,5 kW) @2000 rpm / SAE J1995 (Gross) : 102 HP (76,4 kW) @2000 rpm / SAE J1349 (Net)
Max. Torque	: 375 Nm @1800 rpm (Gross) : 367 Nm @1800 rpm (Net)
Displacement	: 2999 cc
Bore and Stroke	: 95,4 mm x 104,9 mm
Emission Class	: EU Stage-V

UNDERCARRIAGE

Shoe	: Triple grouser 500 mm
No. Of Shoes	: 2 x 46
No. Of Lower Rollers	: 2 x 7
No. Of Upper Rollers	: 2 x 2
Track Tensioning	: Hydraulic Spring Tensioning

CAB

- Improved operator's all round visibility
- Increased cabin internal space
- Use of six viscomount cabin mountings that dampen the vibrations
- High capacity A/C
- High resolution, led backlight, color LCD display
- Opera Control System
- Cooled storage room
- Glass holder, book and object storage pockets
- Pool type floor mat
- Improved operator's comfort through versatile adjustable seat
- Ergonomically redesigned cabin through relocated switch board, and re-styled travel pedals and joysticks.

TRAVEL AND BRAKERS

Travel	: Fully hydrostatic
Travel Motors	: Axial piston type
Reduction	: 2 stage planetary gear
Travel Speed	
High Speed	: 5,7 km/h
Low Speed	: 3,4 km/h
Max. Drawbar Pull	: 11,230 kgf
Gradeability	: 35° (%70)
Parking Brake	: Hydraulic disc type, automatic warnings
Ground Pressure (500mm Shoe):	0,48 kgf/cm ²

LUBRICATION

Centralized lubrication system is provided for lubrication all difficult-to-reach parts on the components, such as boom and arm

HYDRAULIC SYSTEM

Main Pump	
Type	: Double variable displacement axial piston pumps
Max. Flow	: 2 x 129 L/min
Pilot Pump	: 20 L/min
Relief Valves	
Cylinders	: 350 kgf/cm ²
Power Boost	: 372 kgf/cm ²
Travel	: 350 kgf/cm ²
Swing	: 300 kgf/cm ²
Pilot	: 40 kgf/cm ²
Cylinders	
Boom	: 2 x ϕ 105 x ϕ 75 x 1080 mm
Arm	: 1 x ϕ 115 x ϕ 80 x 1220 mm
Bucket	: 1 x ϕ 95 x ϕ 70 x 910 mm

OPERA CONTROL SYSTEM

- Easy-to-use control panel and menus
- Overheat prevention and protection system without interrupting the work
- Automatical electric power-off
- Maximum efficiency by selection of power and work modes
- Error mode registry and warning system
- Improved fuel economy and productivity
- Automatic idling Selection of multi-language on control panel
- Rear-view, arm-view camera (Optional)
- Possibility to register 27 different operating hours
- Anti-theft system with personal code
- Real time monitoring of operational parameters such as pressure, temperature, engine load

SWING SYSTEM

Swing Motor	: Axial piston type integrated with shock absorber valves
Reduction	: 2 stage planetary gear box.
Swing Brakes	: Hydraulic disc type, automatic warnings
Swing Speed	: 11,3 rpm

CAPACITY

Fuel Tank	: 235 L	Engine Oil	: 16 L
Hydraulic Tank	: 115 L	Radiator	: 20 L
Hydraulic System	: 205 L	Urea	: 33 L

ELECTRICAL SYSTEM

Voltage	: 24V
Battery	: 2 x 12 V x 100 Ah
Alternator	: 24 V / 50 A
Starting Motor	: 24V / 4 kW

OPERATING WEIGHT

Standard machine operating weight : 16.700 kg

Operational weight, complying with the ISO 6016 standards, includes full fuel tank, hydraulic system and other liquids, 75 kg operator weight and standard equipped machine weight. Optional equipments are not included.



NEW!

ENGINE

Model	: ISUZU-4HK1X
Type	: Water-cooled, 4 cycle, 4 cylinders, line type direct injection, turbocharger, intercooler, electronic diesel engine
Power	: 172 HP (128 kW) @2000 rpm / SAE J1995 (Gross) : 162 HP (121 kW) @2000 rpm / SAE J1349 (Net)
Max. Torque	: 670 Nm @1600 rpm (Gross) : 649 Nm @1600 rpm (Net)
Displacement	: 5193 cc
Bore and Stroke	: 115 mm x 125 mm
Emission Class	: Stage V- EU

UNDERCARRIAGE

X Type Lower Frame Construction Pentagon Box Type Chassis	
Shoe	: Triple grouser
No. Of Shoes	: 2 x 49
No. Of Lower Rollers	: 2 x 9
No. Of Upper Rollers	: 2 x 2
Track Tensioning	: Hydraulic Spring Tensioning

CAB

- Improved operator's all round visibility
- Increased cabin internal space
- Use of six viscomount cabin mountings that dampen the vibrations
- High capacity A/C
- High resolution, led backlight, color LCD display
- Opera Control System
- Cooled storage room
- Glass holder, book and object storage pockets
- Pool type floor mat
- Improved operator's comfort through versatile adjustable seat
- Ergonomically redesigned cabin through relocated switch board, and re-styled travel pedals and joysticks.

SWING SYSTEM

Swing Motor	: Axial piston type integrated with shock absorber valves
Reduction	: 2 stage planetary gear box.
Swing Brakes	: Hydraulic multi disc type, automatic warnings
Swing Speed	: 12,60 rpm

TRAVEL AND BRAKERS

Travel	: Fully hydrostatic
Travel Motors	: Axial piston type
Reduction	: 2 stage planetary gear
Travel Speed	
High Speed	: 5,8 km/h
Low Speed	: 3,8 km/h
Max. Drawbar Pull	: 18.310 kqf
Gradeability	: 35° (%70)
Parking Brake	: Hydraulic multi disc type
Ground Pressure (600mm Shoe)	: 0,50 kgf/cm ²

HYDRAULIC SYSTEM

Main Pump	
Type	: Double variable displacement axial piston pumps
Max. Flow	: 2 x 233 L/min
Pilot Pump	: Gear, 20 L/min
Relief Valves	
Attachment	: 350 kgf/cm ²
Power Boost	: 370 kgf/cm ²
Travel	: 350 kgf/cm ²
Swing	: 306 kgf/cm ²
Pilot	: 40 kgf/cm ²
Cylinders	
Main Boom	: 2 x ø 120 x ø 85 x 1.300 mm
Stick Cylinder	: 1 x ø 135 x ø 95 x 1.520 mm
Bucket Cylinder	: 1 x ø 120 x ø 85 x 1.060 mm

OPERA CONTROL SYSTEM

- Easy-to-use control panel and menu
- Improved fuel economy and productivity
- Maximum efficiency by selection of power and work modes
- Overheat prevention and protection system without interrupting the work
- Automatic powerboost switch-on and switch-off
- Automatic electric power-off
- Maintenance information and warning system
- Error mode registry and warning system
- Ability to adjust hydraulic flow from Opera screen
- Maintenance information and warning system
- Automatic powershift to improve performance
- Selection of multi-language on control panel.
- Real time monitoring of operational parameters such as pressure, temperature, engine load
- Anti-theft system with personal code
- Possibility to register 27 different operating hours
- Rear-view, arm-view camera (Optional)
- HIDROMEK Smartlink (Optional)

CAPACITY

Fuel Tank	: 405 L	Engine Cooling System	: 33 L
Hydraulic Tank	: 152 L	Engine Oil	: 23 L
Hydraulic System	: 285 L	Urea tank	: 16 L

ELECTRICAL SYSTEM

Voltage	: 24V
Battery	: 2 x 12 V / 150 Ah
Alternator	: 24V / 50 A
Starting Motor	: 24V / 5 kW

LUBRICATION

Centralized lubrication system is provided for lubrication all difficult-to-reach parts on the components, such as boom and arm

OPERATING WEIGHT

Standard machine operating weight : 23.650 kg

Operational weight, complying with the ISO 6016 standards, includes full fuel tank, hydraulic system and other liquids, 75kg operator weight and standard equipped machine weight. Optional equipments are not included.



NEW!

ENGINE

Model	: ISUZU-AQ-6HK1X
Type	: Water-cooled, 4 cycle, 6 cylinders, line type direct injection, turbocharger, intercooler, electronic diesel engine
Power	: 215 HP (161 kW) @1800 rpm / SAE J1995 (Gross) : 207 HP (154 kW) @1800 rpm / SAE J1349 (Net)
Max. Torque	: 940 Nm @1500 rpm (Gross) : 903 Nm @1500 rpm (Net)
Displacement	: 7790 cc
Bore and Stroke	: 115 mm x 125 mm
Emission Class	: Stage IV / Tier 4 Final (EU/EPA)

SUB-FRAME

X Type Lower Frame Construction Pentagon Box Type Chassis	
Shoe	: Triple grouser
No. Of Shoes	: 2 x 51 pieces
No. Of Lower Rollers	: 2 x 9 pieces
No. Of Upper Rollers	: 2 x 2 pieces
Full Trackguard	: 2 x 3 pieces
Track Tensioning	: Hydraulic Spring Tensioning

CAB

- Improved operator's all round visibility
- Increased cabin internal space
- Use of six viscomount cabin mountings that dampen the vibrations
- High capacity A/C
- High resolution, led backlight, color LCD display
- Opera Control System
- Cooled storage room
- Glass holder, book and object storage pockets
- Pool type floor mat
- Improved operator's comfort through versatile adjustable seat
- Ergonomically redesigned cabin through relocated switch board, and re-styled travel pedals and joysticks.

TRAVEL AND BRAKES

Travel	: Fully hydrostatic
Travel Motor	: Axial piston motor with 2 speed stages and inclined plate
Reduction	: Planetary gear system with 2 stages
Travel Speed	
High Speed	: 5,1 km/h
Low Speed	: 3,0 km/h
Max Traction	: 25.460 kgf
Gradeability	: 35° (70%)
Parking Brake	: Hydraulic, disc type with automatic warning
Ground pressure (600mm)	: 0,61 kgf/cm ²

LUBRICATION

Centralized lubrication system is provided for lubrication all difficult-to-reach parts on the components, such as boom and arm

HYDRAULIC SYSTEM

Main Pump	
Type	: 2 axial piston type pumps with doublevariable displacement and inclined plate
Max. Flow Rate	: 2 x 259 L/min
Pilot Pump	: Gear type, 30,5 L/min
Working Pressures	
Cylinders	: 350 kgf/cm ²
Power Boost	: 380 kgf/cm ²
Travel	: 350 kgf/cm ²
Swing	: 285 kgf/cm ²
Pilot	: 40 kgf/cm ²
Cylinders	
Boom	: 2 x ø 135 x ø 95 x 1.455 mm
Arm	: 1 x ø 150 x ø 105 x 1.760 mm
Bucket	: 1 x ø 135 x ø 95 x 1.195 mm

OPERA CONTROL SYSTEM

- Easy-to-use control panel and menu
- Improved fuel economy and productivity
- Maximum efficiency by selection of power and work modes
- Overheat prevention and protection system without interrupting the work
- Automatic powerboost switch-on and switch-off
- Automatic electric power-off
- Maintenance information and warning systek
- Error mode registry and warning system
- Ability to adjust hydraulic flow from Opera screen
- Maintenance information and warning system
- Automatic powershift to improve performance
- Selection of multi-language on control panel.
- Real time monitoring of operational parameters such as pressure, temperature, engine load
- Anti-theft system with personal code
- Possibility to register 27 different operating hours
- Rear-view, arm-view camera (Optional)
- Hidromek Smartlink (Optional)

SWING SYSTEM

Swing Motor	: Axial piston type integrated with shock absorber valves
Reduction	: 2 stage planetary gear box.
Swing Brakes	: Hydraulic multi disc type, automatic warnings
Swing Speed	: 10,10 rpm

CAPACITY

Fuel Tank	: 475 L	Engine Oil	: 37 L
Hydraulic Tank	: 210 L	Engine Cooling System	: 55 L
Hydraulic System	: 395 L	Urea tank	: 70 L

ELECTRICAL SYSTEM

Voltage	: 24 V
Battery	: 2 x 12 V / 150 Ah
Alternator	: 24 V / 50 A
Starting Motor	: 24 V / 5 kw

WEIGHT

Standard machine operating weight	: 32.100 kg
-----------------------------------	-------------

Operational weight, complying with the ISO 6016 standards, includes full fuel tank, hydraulic system and other liquids, 75 kg operator weight and standard equipped machine weight. Optional equipments are not included.



NEW!

ENGINE

Model	: ISUZU-AH-6HK1X
Type	: Water-cooled, 4 cycle, 6 cylinders, line type direct injection, turbocharger, intercooler, electronic diesel engine
Power	: 287 HP (214 kW) @2000 rpm / SAE J1995 (Gross) : 268 HP (200 kW) @2000 rpm / SAE J1349 (Net)
Max. Torque	: 1136 Nm @1500 rpm (Gross) : 1070 Nm @1500 rpm (Net)
Displacement	: 7790 cc
Bore and Stroke	: 115 mm x 125 mm
This new engine complies with the Emission Regulations U.S. EPA Tier III, and and EU Stage III-A	

UNDERCARRIAGE

X Type Lower Frame Construction Pentagon Box Type Chassis	
Shoe	: Triple grouser
No. Of Shoes	: 2 x 50
No. Of Lower Rollers	: 2 x 9
No. Of Upper Rollers	: 2 x 2
Track Tensioning	: Hydraulic Spring Tensioning

CAB

- Improved operator's all round visibility
- Increased cabin internal space
- Use of six viscomount cabin mountings that dampen the vibrations
- High capacity A/C
- High resolution, led backlight, color LCD display
- Opera Control System
- Cooled storage room
- Glass holder, book and object storage pockets
- Pool type floor mat
- Improved operator's comfort through versatile adjustable seat
- Ergonomically redesigned cabin through relocated switch board, and re-styled travel pedals and levers

TRAVEL AND BRAKERS

Travel	: Fully hydrostatic
Travel Motors	: Axial piston type
Reduction	: 2 stage planetary gear
Travel Speed	
High Speed	: 5,0 km/h
Low Speed	: 3,0 km/h
Max. Drawbar Pull	: 30.260 kgf
Gradeability	: 35° (%70)
Parking Brake	: Hydraulic multi disc type
Ground pressure	: 0,74 kgf/cm ²

LUBRICATION

Centralized lubrication system is provided for lubrication all difficult-to-reach parts on the components, such as boom and arm

HYDRAULIC SYSTEM

Main Pump	
Type	: Double variable displacement axial piston pumps
Max. Flow	: 2 x 300 L/min
Pilot Pump	: Gear, 28 L/min
Relief Valves	
Attachment	: 350 kgf/cm ²
Power Boost	: 380 kgf/cm ²
Travel	: 350 kgf/cm ²
Swing	: 285 kgf/cm ²
Pilot	: 40 kgf/cm ²
Cylinders	
Main Boom	: 2 x ø 150 x ø 105 x 1510 mm
Stick Cylinder	: 1 x ø 170 x ø 120 x 1735 mm
Bucket Cylinder	: 1 x ø 150 x ø 110 x 1280 mm

OPERA CONTROL SYSTEM

- Easy-to-use control panel and menu
- Improved fuel economy and productivity
- Maximum efficiency by selection of power and work modes
- Overheat prevention and protection system without interrupting the work
- Automatic powerboost switch-on and switch-off
- Automatic electric power-off
- Maintenance information and warning system
- Error mode registry and warning system
- Ability to adjust hydraulic flow from Opera screen
- Maintenance information and warning system
- Automatic powershift to improve performance
- Selection of multi-language on control panel.
- Real time monitoring of operational parameters such as pressure, temperature, engine load
- Anti-theft system with personal code
- Possibility to register 26 different operating hours
- Rear-view, arm-view camera
- Hidromek Smartlink

SWING SYSTEM

Swing Motor	: Axial piston type integrated with shock absorber valves
Reduction	: 2 stage planetary gear box.
Swing Brakes	: Hydraulic multi disc type, automatic warnings
Swing Speed	: 9,3 rpm

CAPACITY

Fuel Tank	: 565 L	Engine Oil	: 32 L
Hydraulic Tank	: 385 L	Swing Reduction	: 19 L
Hydraulic System	: 468 L	Travel Reduction	: 2x10 L
Radiator	: 44 L		

ELECTRICAL SYSTEM

Voltage	: 24V
Battery	: 2 x 12 V / 150 Ah
Alternator	: 24 V / 50 A
Starting Motor	: 24V / 5,0 kw

OPERATING WEIGHT

Standard machine operating weight	: 41.800 kg
-----------------------------------	-------------

Operational weight, complying with the ISO 6016 standards, includes full fuel tank, hydraulic system and other liquids, 75 kg operator weight and standard equipped machine weight. Optional equipments are not included.



NEW!

ENGINE

Model	: ISUZU-6UZ1X
Type	: Water-cooled, 4 cycle, 6 cylinders, line type, direct injection, turbocharger, intercooler, diesel engine
Power	: 362 HP (270 kW) @2000 rpm / SAE J1995 (Gross) : 348 HP (260 kW) @1950 rpm / SAE J1995 (Net)
Max. Torque	: 1650 Nm @1300 rpm (Gross) : 1400 Nm @1500 rpm (Net)
Displacement	: 9839 cc
Bore and Stroke	: ø 120 mm x 145 mm
Emission Class	: Stage V-EU

UNDERCARRIAGE

X Type Lower Frame Construction Pentagon Box Type Chassis	
Shoe	: 3 grouser
No. Of Shoes	: 2 x 50
No. Of Lower Rollers	: 2 x 9
No. Of Upper Rollers	: 2 x 2
Full Trackguard	: Complete
Track Tensioning	: Hydraulic Spring Tensioning

CAB

- Wide cab and easy entrance
- Use of six viscomount cabin mountings that dampen the vibrations
- Cooled storage room
- Colourful, Easy to read TFT indicant monitor
- Glass holder, book and object storage pockets
- Full automatic digitally air-conditioner
- Overclass standarts on the visibility
- Pool type flor mat
- Improved operator's comfort through versatile adjustable seat
- Ergonomically redesigned cabin through relocated switch board, and re-styled travel pedals and joysticks.
- USB connected MP3 player
- Easy to open the front sliding glass
- Front and rear sun visor
- Large storage areas
- Improved seat to back angle
- The height adjustable seat armrests
- Opera Control System

TRAVEL AND BRAKERS

Travel	: Fully hydrostatic
Travel Motors	: Axial piston type
Reduction	: 3 stage planetary gear
Travel Speed	
High Speed	: 4,60 km/h
Low Speed	: 2,80 km/h
Max. Drawbar Pull	: 35,880 kgf
Gradeability	: 35° (%70)
Parking Brake	: Hydraulic multi disc type, integrated transmission
Ground Pressure (600mm Shoe)	: 0,91 kgf/cm ²

HYDRAULIC SYSTEM

Main Pump	
Type	: Double variable displacement axial piston pumps
Max. Flow	: 2 x 376 L/min
Pilot Pump	: 29 L/min
Relief Valves	
Attachment	: 330 kgf/cm ²
Power Boost	: 355 kgf/cm ²
Travel	: 330 kgf/cm ²
Swing	: 330 kgf/cm ²
Pilot	: 40 kgf/cm ²
Cylinders	
Main Boom	: 2 x ø 170 x ø 115 x 1.650 mm
Stick Cylinder	: 1 x ø 190 x ø 130 x 1.870 mm
Bucket Cylinder	: 1 x ø 170 x ø 120 x 1.335 mm

OPERA CONTROL SYSTEM

- Automatic idling Selection of multi-language on control panel
- Improved fuel economy and productivity
- Automatical electric power-off
- Maximum efficiency by selection of power and work modes
- Error mode registry and warning system
- Hidromek Smartlink (Optional)
- Automatic preheating
- Automatical powerboost
- Overheat prevention and protection system without interrupting the work
- Easy-to-use control panel and menus
- Rear-view, arm-view camera
- Possibility to register 27 different operating hours
- Anti-theft system with personal code
- Real time monitoring of operational parameters such as pressure, temperature, engine load

SWING SYSTEM

Swing Motor	: Axial piston type integrated with shock absorber valves
Reduction	: 2 stage planetary gear box.
Swing Brakes	: Hydraulic multi disc type, automatic warnings
Swing Speed	: 8,10 rpm

CAPACITY

Fuel Tank	: 655 L	Engine Oil	: 41 L
Hydraulic Tank	: 370 L	Engine Cooling System	: 65 L
Hydraulic System	: 615 L	Urea Tank	: 33 L

ELECTRICAL SYSTEM

Voltage	: 24V
Battery	: 2 x 12 V x 165 Ah
Alternator	: 24 V / 50 A
Starting Motor	: 24 V / 5,5 kw

LUBRICATION

Centralized lubrication system is provided for lubrication all difficult-to-reach parts on the components, such as boom and arm

OPERATING WEIGHT

Standard machine operating weight : 52.000 kg

Operational weight, complying with the ISO 6016 standards, includes full fuel tank, hydraulic system and other liquids, 75kg operator weight and standard equipped machine weight. Optional equipments are not included.



NEW!

ENGINE

Make	: Mercedes-Benz MTU6R1000
Type	: High power and torque output, water cooled, turbocharged diesel engine.
Number of Cylinders	: 6 in line
Bore & Stroke	: 110 x 135 mm
Displacement	: 7.700 cc
Maximum Power	: 282 HP (210 kW) @1800 rpm
Maximum Torque	: 1200 Nm @ (1200 - 1600 rpm)
Conforms to European Stage V exhaust gas emission regulations	

TRANSMISSION

- Autoshift transmission for heavy duty service
- 5 forward, 3 reverse gears
- Torque converter with 2.194:1 stall ratio
- 4 Wheel Drive
- Transmission oil cooler
- Engine start only at the gear lever on neutral position for safety.
- Electronic parking brake

HYDRAULIC SYSTEM

Closed center type hydraulic system with LS type variable displacement piston type pumps.

Pump Flow	: 283 L/min @2100 rpm
Pressure	: 300 bar

DRIVING SPEED

1 st gear next	: 5 km/h
2 nd gear next	: 10 km/h
3 rd gear next	: 16 km/h
4 th gear next	: 25 km/h
5 th gear next	: 40 km/h
1 st gear back	: 5 km/h
2 nd gear back	: 10 km/h
3 rd gear back	: 26 km/h

AXLES

- Heavy duty type axles
- Planetary type reduction gears
- Total 26 degrees oscillation on the rear axle
- Equipped with differential lock on the front axle

CAB & HOOD

- Widened visual angle
- Ergonomic & Aesthetic Interior Design
- 8" LCD coloured touchpad display
- Improved Opera Control System
- Externally servicable Air Conditioner system
- Cool-box
- Electro hydraulic control levers
- ROPS and FOPS certificated cab
- 35° tilting cab for maintenance
- Air suspension seat with heating
- TIPSHIFT control on operator console
- Pool type floor mats
- Tablet PC and phone holder
- SmartLink (Optional)
- Storage boxes for operator
- Sun-wisors
- LED working lighths
- Electrically controlled side mirrors with heating
- Rear view camera
- One-piece opening hood, electrically controlled.
- Independently adjustable joystick console and armed

TIRES

Front / Rear : 23,5 - R25

OPERATING WEIGHT

Standard machine operating weight : 20.600 kg

Operational weight, complying with the ISO 6016 standards, includes full fuel tank, hydraulic system and other liquids, 75 kg operator weight and standard equipped machine weight. Optional equipments are not included.



ENGINE

Make	: Mercedes-Benz 6R1100
Type	: High power and torque output, water cooled, turbocharged diesel engine.
Number of Cylinders	: 6 in line
Bore & Stroke	: 125 x 145 mm
Displacement	: 10.700 cc
Maximum Power	: 324 HP (242 kW) @1800 rpm
Maximum Torque	: 1600 Nm @1300 rpm
Conforms to European Stage IV exhaust gas emission regulations	

TRANSMISSION

- Autoshift transmission for heavy duty service
- 5 forward, 3 reverse gears
- Torque converter with 2.194:1 stall ratio
- 4 Wheel Drive
- Transmission oil cooler
- Engine start only at the gear lever on neutral position for safety.
- Electronic parking brake

HYDRAULIC SYSTEM

Closed center type hydraulic system with LS type variable displacement piston type pumps.

Pump Flow (Pump 1)	: 190 L/min @1900 rpm
Pressure (Pump 1)	: 250 bar
Pump Flow (Pump 2)	: 190 L/min @1900 rpm
Pressure (Pump 2)	: 210 bar
Pump Flow (Pump 3)	: 85 L/min @1900 rpm
Pressure (Pump 3)	: 250 bar

DRIVING SPEED

@1900 rpm engine speed		
1 st gear	: 6	km/h
2 nd gear	: 11	km/h
3 rd gear	: 18	km/h
4 th gear	: 25	km/h
5 th gear	: 37	km/h

AXLES

- Heavy duty type ZF axles
- Planetary type reduction gears
- Total 26 degrees oscillation on the rear axle
- Equipped with differential lock on the front axle

CAB & HOOD

- Widened visual angle
- Ergonomic & Aesthetic Interior Design
- 8" LCD coloured touchpad display
- Improved Opera Control System
- Externally servicable Air Conditioner system
- Cool-box
- Electro hydraulic control levers
- ROPS and FOPS certificated cab
- 35° tilting cab for maintenance
- Air suspension seat with heating
- TIPSHIFT control on operator console
- Pool type floor mats
- Tablet PC and phone holder
- SmartLink (Optional)
- Storage boxes for operator
- Sun-wisors
- LED headlamps
- LED working lighs
- Electrically controlled side mirrors with heating
- Rear view camera
- One-piece opening hood, electrically controlled.
- Independently adjustable joystick console and armed

TIRES

Front / Rear : 26,5R25-L3

OPERATING WEIGHT

Operating weight (with standard equipment) : 26.300 kg

Operational weight, complying with the ISO 6016 standards, includes full fuel tank, hydraulic system and other liquids, 75 kg operator weight and standard equipped machine weight. Optional equipments are not included.


NEW!

ENGINE

Model	: DEUTZ TCD 4.1
Type	: Water cooled, 4 cycle, 4 cylinders, line type direct injection, turbocharger, intercooler, electronic diesel engine
Power	: 141 HP (105 kW) @2000 rpm / SAE J1995 (Gross) : 132 HP (98 kW) @2000 rpm / SAE J1349 (Net)
Max. Torque	: 550 Nm @1600 rpm (Gross) : 519 Nm @1600 rpm (Net)
Displacement	: 4100 cc
Bore and Stroke	: 101 mm x 126 mm
This engine complies with the Emission Regulations U.S. EPA Tier 4 Final, and EU Stage IV	

LOWER STRUCTURE (CHASSIS)

Chassis	: Box shaped, reinforced lower chassis, front dozer blade and rear outriggers (stabilizers) as standard figures.
Axles	: The pivot pin mounted front axle allows two options: 8° in each direction for best matching conditions, or could be locked at any desired position for perfect stability.
Tires	: 19,5 - R18 (Single tire) : 10.00 - R20 (Double tire)

CAB

- Improved operator's all round visibility
- Increased cabin internal space
- Use of six viscomount cabin mountings that dampen the vibrations
- High capacity A/C
- Opera Control System
- Cooled storage room
- Glass holder, book and object storage pockets
- Pool type floor mat
- Improved operator's comfort through versatile adjustable seat

TRAVEL AND BRAKERS

Travel	: Fully hydrostatic
Travel Motors	: Axial piston type
Reduction	: 2 stage planetary gear
Travel Speed	
High Speed	: 36 km/h
Low Speed	: 10 km/h
Max. Drawbar Pull	: 7.000 kqf
Gradeability	: 24° (%43)
Service Brake	: Independent front/rear style (double circuit) hydraulic power brake system. Pressure engaged/spring released type. Located "on hub" for ideal stability and safety.

SWING SYSTEM

Swing Motor	: Axial piston type integrated with shock absorber valves
Reduction	: 2 stage planetary gear box.
Swing Brakes	: Hydraulic multi disc type.
Swing Speed	: 13,9 rpm

LUBRICATION

Centralized lubrication system is provided for lubrication all difficult-to-reach parts on the components, such as boom and arm

HYDRAULIC SYSTEM

Main Pump	
Type	: Double variable displacement axial piston pumps
Max. Flow	: 159 L/min
Pilot Pump	: 20 L/min
Relief Valves	
Cylinders	: 330 kgf/cm ²
Power Boost	: 360 kgf/cm ²
Travel	: 360 kgf/cm ²
Swing	: 260 kgf/cm ²
Pilot	: 40 kgf/cm ²
Cylinders	
Main Boom	: 2 x ø 110 x ø 75 x 1.080 mm
Stick Cylinder	: 1 x ø 115 x ø 80 x 1.225 mm
Bucket Cylinder	: 1 x ø 100 x ø 70 x 910 mm
Additional boom cylinder 1	: 2 x ø 110 x ø 75 x 930 mm
Additional boom cylinder 2	: 1 x ø 150 x ø 90 x 680 mm

OPERA CONTROL SYSTEM

- Easy-to-use control panel and menus
- Overheat prevention and protection system without interrupting the work
- Improved fuel economy and productivity
- Automatic powerboost switch-on and switch-off
- Automatic electric power-off
- Maintenance information and warning system
- Selection of multi-language on control panel
- Rear-view, arm-view camera (Optional)
- Maximum efficiency by selection of power and work modes
- Possibility to register 27 different operating hours
- Automatic preheating
- Error mode registry and warning system
- Anti-theft system with personal code
- Real time monitoring of operational parameters such as pressure, temperature, engine load
- Hidromek Smartlink (Optional)
- Cruise control travel speed
- Auto-Idle and automatic deceleration system

STEERING SYSTEM

The "orbitrol" type steering system controls a steering cylinder located on the front axle.

CAPACITY

Fuel Tank	: 245 L	Transmission	: 2,5 L
Hydraulic Tank	: 215 L	Engine Oil	: 16 L
Hydraulic System	: 210 L	Radiator	: 32 L
Swing Reduction	: 3 L	Front / Rear axles	: 14,5/17,4 L

ELECTRICAL SYSTEM

Voltage	: 24V
Battery	: 2 x 12 V / 100 Ah
Alternator	: 28 V / 100 A
Starting Motor	: 24 V / 4,0 kW

WEIGHT

Standard machine operating weight : 17.550 kg

Operational weight, complying with the ISO 6016 standards, includes full fuel tank, hydraulic system and other liquids, 75kg operator weight and standard equipped machine weight. Optional equipments are not included.



SUPRA

ENGINE

Make	: PERKINS
Type	: 1204F-E44TAN Diesel Engine
Number of Cylinders	: 4 in line
Bore & Stroke	: ø 105 x 127 mm
Displacement	: 4400 cc
Maximum Power	: 99,8 HP (74,4 kW) @2200 rpm
Maximum Torque	: 450 Nm @1400 rpm

High power and torque output, water cooled turbocharged diesel engine.
Compatible with U.S EPA Tier 4 Final and EU Stage IV exhaust gas emission regulations

TRANSMISSION

- Autoshift transmission for heavy duty service
- 6 forward, 3 reverse gears
- Torque convertor lock (Lock-Up)
- Torque converter with 2,38:1 stall ratio
- Electrically controlled 2 Wheel drive or 4 Wheel Drive selection
- Transmission oil cooler
- A neutral circuit allows starting only when the control lever is in neutral position for safety.

AXLES

- Heavy duty service type CARRARO axles
- Planetary outboard type reduction gears
- Total 16 degrees oscillation on the front axle
- Equipped with differential lock.

TIRES

Front / Rear	: 16,9 - 28 (14 ply rating)
--------------	-----------------------------

CAB & HOOD

- Widened visual angle
- Ergonomic & Aesthetic Interior Design
- 3" LCD display on front panel and 5.5" coloured TFT display on side panel
- Opera Control System
- High capacity A/C system
- Cool-box
- Improved ventilating with 15 air nozzles
- ISO Patternshifter
- ROPS and FOPS certificated cab
- Air suspension seat
- TIPSHIFT front loader joystick
- Pool type floor mats
- Removable lids
- Smart-Link
- Storage boxes for operator
- Foldable side steps
- Plastic fuel tank
- LED working lights
- LED step lights

HYDRAULIC SYSTEM

Closed type hydraulic system with variable displacement piston type pump, renewable flowsharing and valves with regeneration (Flowcharging)

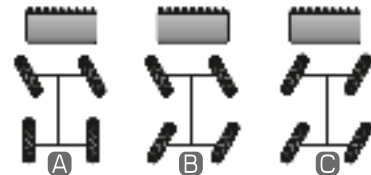
Main Pump Flow	: 163 L/min @2200 rpm
Pressure	: 250 bar

DRIVING SPEED

@ 2200 rpm engine speed	
1 st gear	: 6 km/h
2 nd gear	: 9 km/h
3 rd gear	: 12 km/h
4 th gear	: 20 km/h
5 th gear	: 28 km/h
6 th gear	: 40 km/h

STEERING

- Electrical controlled 3 different steering modes
- | | |
|---|---|
| A | 2 - wheel front steering for road drive |
| B | 4 - wheel steering for tight turns |
| C | 4 - wheel "crab" steering for close - to wall digging and ditch closing |



FILLING CAPACITIES

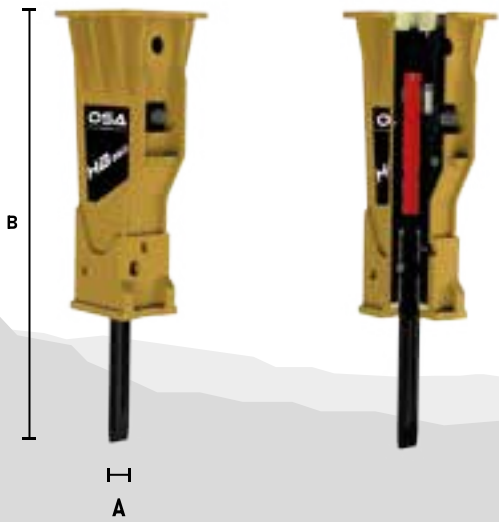
Engine Oil Pump	: 8,8 L
Engine Cooling System	: 22 L
Fuel Tank	: 150 L
Hydraulic Oil Tank	: 70 L
Transmission Oil	: 16 L
Front Axle Differential	: 9 L
Front Axle Hub Reducers	: 1,7 x 2 L
Rear Axle Differential	: 16 L
Ad Blue	: 19 L

OPERATING WEIGHT

Operating weight (with standard equipment) : 9.725 kg

Operational weight, complying with the ISO 6016 standards, includes full fuel tank, hydraulic system and other liquids, 75 kg operator weight and standard equipped machine weight. Optional equipments are not included.

SERIE HB LIVIANA I



MODEL	U.M.	HB 70	HB 90	HB 100	HB 150	HB 180	HB 250	HB 300	HB 350	HB 450	HB 580
TOOL DIAMETER (A)	mm	40	40	42	45	56	63	67	77	85	92
TOOL DIAMETER (A)	in.	1.75	1.57	1.65	1.77	2.20	2.48	2.64	3.03	3.35	3.62
HEIGHT WITH TOOL (B)	mm.	950	950	1035	1035	1210	1280	1300	1480	1600	1800
HEIGHT WITH TOOL (B)	in.	37	37	41	41	48	50	51	58	63	71
EXCAVATOR WEIGHT	Ton	0.8/1.5	1/1.8	1.2/2	1.5/2.5	2.5/4.5	3/5.5	4/6	6/9	7/10	7/14
EXCAVATOR WEIGHT	lbs	1400/3000	1400/3000	1000/4000	3000/5000	5000/9000	6000/11000	8000/12000	12000/18000	14000/20000	14000/28000
OPERATING TOTAL WEIGHT	Kg.	80	100	115	155	200	260	300	405	480	670
OPERATING TOTAL WEIGHT	lbs	176.4	220.5	253.5	341.7	440.9	573.2	661.4	829.9	1058.2	1477.1
OIL PRESSURE	Bar	60/130	60/130	90/120	90/120	90/120	100/130	100/130	110/140	90/140	130/150
OIL PRESSURE	psi	870/1885	870/1885	1305/1740	1305/1740	1450/1885	1450/1885	1450/1885	1595/2031	1305/2031	1885/2176
OIL CAPACITY	L/min	18/25	18/25	20/35	20/35	25/50	30/60	30/70	60/90	60/100	70/100
OIL CAPACITY	gal/min	5/7	5/7	5/9	5/9	7/13	9/16	8/18	16/24	16/26	18/26
STRIKE FREQUENCY	c/min	930/1300	700/1400	930/1300	700/1400	600/1200	500/1000	450/900	400/850	400/800	400/850
STRIKE FREQUENCY	s/min	930/1300	700/1400	930/1300	700/1400	600/1200	500/1000	450/900	400/850	400/800	400/850
STRIKE ENERGY	joule	150	155	160	190	330	450	550	750	850	1300
STRIKE ENERGY	ft lbs	111	114	118	140	243	332	406	553	627	959
EQUIPMENT WEIGHT	Kg.	70	90	100	140	180	240	280	380	450	580
EQUIPMENT WEIGHT	lbs	154.3	198.4	220.5	308.6	396.8	529.1	617.3	837.8	992.1	1278.7
BACK PRESSURE	Bar	20/25	20/25	20/25	20/25	20/25	20/25	20/25	20/25	20/25	20/25
BACK PRESSURE	psi	290/362	290/362	290/362	290/362	290/362	290/362	290/362	290/362	290/362	290/362



I SERIE HB MEDIANA



MODEL	U.M.	HB910	HB1250	HB1500	HB1700	HB1900	HB2500
TOOL DIAMETER (A)	mm	102	125	135	138	140	150
TOOL DIAMETER (A)	in.	4.02	4.92	5.31	5.43	5.51	5.91
HEIGHT WITH TOOL (B)	mm.	2050	2280	2400	2420	2430	2650
HEIGHT WITH TOOL (B)	in.	81	90	94	95	96	104
EXCAVATOR WEIGHT	Ton	12/16	15/18	16/22	18/22	18/24	24/36
EXCAVATOR WEIGHT	lbs	24000/35000	33000/39000	35000/48000	39000/48000	39000/52000	52000/79000
OPERATING TOTAL WEIGHT	Kg.	1020	1340	1630	1860	2000	2750
OPERATING TOTAL WEIGHT	lbs	2248.7	2954.2	3593.5	4100.6	4409.2	6062.7
OIL PRESSURE	Bar	150/170	150/170	130/160	130/160	130/150	140/160
OIL PRESSURE	psi	2176/2466	2176/2466	1885/2321	1885/2321	1885/2176	2031/2321
OIL CAPACITY	L/min	80/110	90/120	150/210	150/230	180/230	250/270
OIL CAPACITY	gal/min	21/29	24/32	40/55	40/61	48/61	66/71
STRIKE FREQUENC	c/min	300/700	300/700	350/550	350/600	350/600	350/600
STRIKE FREQUENCY	s/min	300/700	300/700	350/550	350/600	350/600	350/600
STRIKE ENERGY	joule	2000	3000	4000	4200	4500	6000
STRIKE ENERGY	ft lbs	1475	2213	2950	3098	3319	4425
EQUIPMENT WEIGHT	Kg.	900	1200	1480	1710	1850	2500
EQUIPMENT WEIGHT	lbs	1984.2	2645.5	3262.8	3769.9	4078.6	5511.6
BACK PRESSURE	Bar	20/25	20/25	20/25	20/25	20/25	20/25
BACK PRESSURE	psi	290/362	290/362	290/362	290/362	290/362	290/362

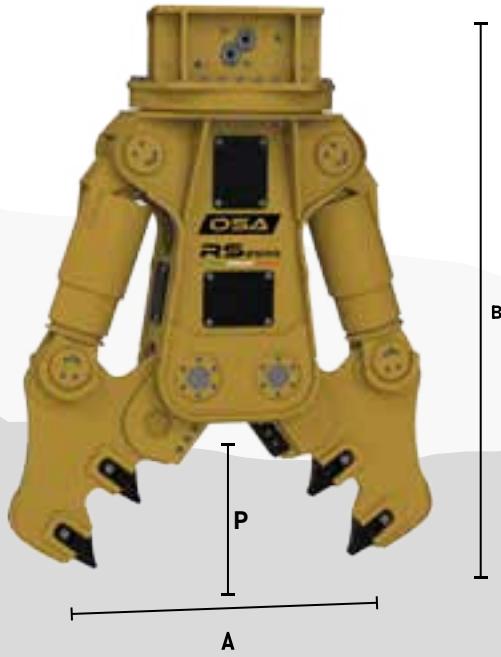


SERIE HB PESADA I



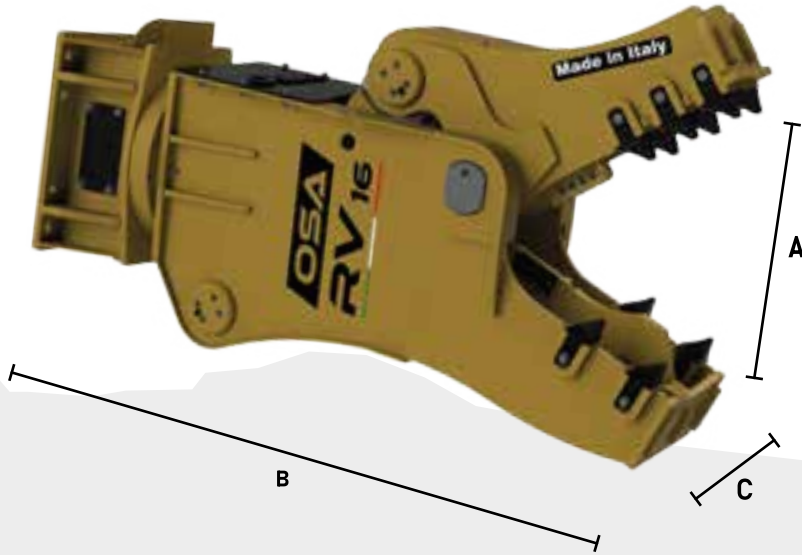
MODEL	U.M.	HB3000	HB4000	HB5000	HB6000	HB8000	HB10000
TOOL DIAMETER (A)	mm	160	175	185	200	220	240
TOOL DIAMETER (A)	in.	6.30	6.89	7.09	7.95	8.07	9.45
HEIGHT WITH TOOL (B)	mm.	2980	3180	3250	4000	4500	5000
HEIGHT WITH TOOL (B)	in.	117	125	128	157	177	197
EXCAVATOR WEIGHT	Ton	30/40	35/60	45/70	60/100	65/110	90/140
EXCAVATOR WEIGHT	lbs	60000/80000	76000/120000	90000/140000	120000/200000	130000/220000	180000/280000
OPERATING TOTAL WEIGHT	Kg.	3300	4300	5100	6000	8000	10000
OPERATING TOTAL WEIGHT	lbs	7257.3	9479.9	11243.6	13227.7	17637	22046.2
OIL PRESSURE	Bar	140/160	140/190	160/190	170/210	170/210	170/210
OIL PRESSURE	psi	2031/2321	2031/2757	2321/2756	2466/3046	2466/3046	2466/3046
OIL CAPACITY	L/min	260/320	280/340	260/360	310/390	350/420	450/530
OIL CAPACITY	gal/min	69/85	74/90	69/95	82/103	92/111	119/140
STRIKE FREQUENCY	c/min	250/500	250/500	250/500	250/360	280/350	250/320
STRIKE FREQUENCY	s/min	250/500	250/500	250/500	250/360	280/350	250/320
STRIKE ENERGY	joule	9500	12000	13700	14500	17000	19000
STRIKE ENERGY	ft lbs	7007	8851	10105	10695	12539	14014
EQUIPMENT WEIGHT	Kg.	3000	3900	4700	5500	7500	10000
EQUIPMENT WEIGHT	lbs	6613.9	8598	10361.7	12125.4	16534.7	22046.2
BACK PRESSURE	Bar	20/25	20/25	20/25	20/25	20/25	20/25
BACK PRESSURE	psi	290/362	290/362	290/362	290/362	290/362	290/362





MODEL	U.M.	RS 200	RS 1000	RS 1500	RS 1800	RS 2000	RS 2500	RS 4000	RS 5000	RS 6000	RS 8000	RS 12000
OPENING (A)	mm.	250	600	710	825	920	1100	1350	1500	1650	1830	2300
OPENING (A)	in.	10	24	28	32	36	43	53	59	65	72	91
LENGHT (B)	mm.	840	1700	2010	2180	2300	2700	2800	2850	3000	3200	3820
LENGHT (B)	in.	33	67	79	85	90	106	110	112	118	126	150
WIDTH (P)	mm.	300	460	480	665	740	880	1034	1055	1080	1185	1410
WIDTH (P)	in.	12	18	19	26	29	35	41	42	43	47	56
EXCAVATOR WEIGHT	Ton	1.5/3	12/16	16/22	22/30	30/40	35/50	40/50	50/65	60/80	80/100	90/150
EXCAVATOR WEIGHT	lbs	3000/ 6000	24000/ 44000	32000/ 44000	44000/ 60000	60000/ 80000	70000/ 100000	80000/ 100000	100000/ 130000	120000/ 160000	160000/ 200000	180000/ 300000
EQUIPMENT WEIGHT	kg	210	1150	1400	1900	2200	2750	3800	4800	5800	7900	11950
EQUIPMENT WEIGHT	lbs	463	2535	3085	4189	4850	6063	8378	10582	12787	17416	26345
OIL PRESSURE	bar	220	300	340	340	340	340	340	340	340	340	340
OIL PRESSURE	psi	3190	4350	4930	4930	4930	4930	4930	4930	4930	4930	4930
OIL CAPACITY	L/min	20/30	110/150	150/180	200/230	220/300	250/350	300/380	350/400	380/450	400/500	450/700
OIL CAPACITY	gal/min	5/8	53/58	58/63	66/79	74/92	79/90	79/100	92/106	100/119	106/132	119/185
ROTATION OIL PRESSURE	bar	50	140	140	140	140	140	140	140	140	140	140
ROTATION OIL PRESSURE	psi	725	2030	2030	2030	2030	2030	2030	2030	2030	2030	2030
ROTATION OIL CAPACITY	L/min	15	30	30	30	30	30	30	60	60	60	90
ROTATION OIL CAPACITY	gal/min	4	8	8	8	8	8	8	16	16	16	24

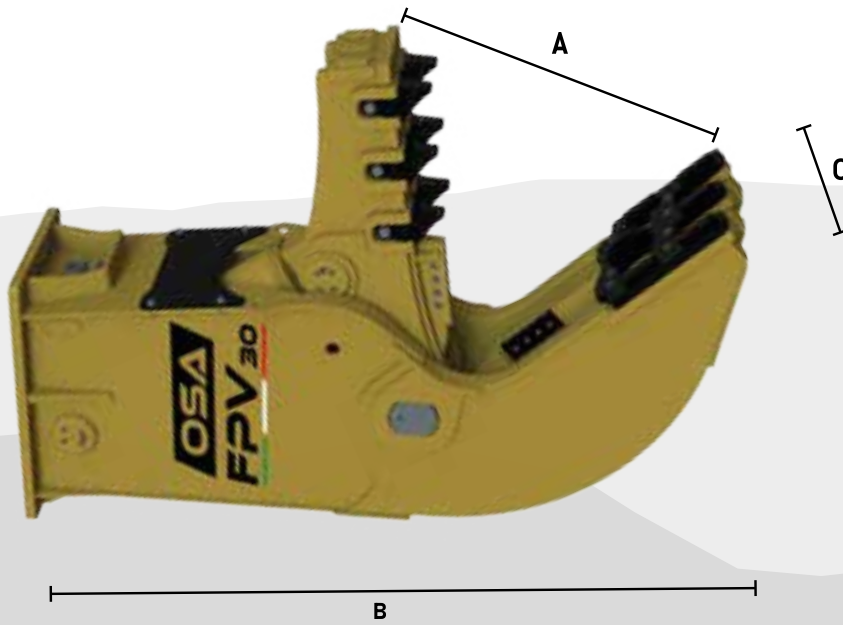




MODEL	U.M.	RV 6	RV 10	RV 16	RV 20	RV 25	RV 30	RV 40	RV 60	RV 80	RV 110
OPENING (A)	mm	520	630	790	840	880	1010	1130	1280	1350	1720
OPENING (A)	in.	20	25	31	33.5	34.6	39.7	45	50	53	68
LENGHT (B)	mm	1600	1815	2120	2300	2400	2660	2850	3230	3400	3800
LENGHT (B)	in.	63	71.5	83.5	90.6	94.5	105	112	127	134	150
WIDTH (P)	mm	340	390	500	500	530	530	550	660	620	650
WIDTH (P)	in.	13.4	15.5	19.7	19.7	20.8	20.8	21.65	25.98	24.4	25.6
EXCAVATOR WEIGHT	Ton	7/12	9/15	15/20	20/26	25/32	30/40	38/55	50/80	70/90	90/120
EXCAVATOR WEIGHT	lbs	14000/ 24000	18000/ 30000	30000/ 40000	40000/ 52000	50000/ 64000	60000/ 80000	76000/ 110000	100000/ 180000	140000/ 180000	180000/ 240000
EQUIPMENT WEIGHT	Kg	660	1105	1695	2000	2500	2970	3940	6000	7800	9950
EQUIPMENT WEIGHT	lbs	1455	2436	3737	4400	5511	6547	8333	13228	17196	21936
OIL PRESSURE	Bar	250	310	340	340	340	340	340	340	340	340
OIL PRESSURE	psi	3625	4496	4931	4931	4931	4931	4931	4931	4931	4931
OIL CAPACITY	l/min	80/100	100/150	150/220	210/260	250/300	300/350	300/350	300/400	400/500	500/600
OIL CAPACITY	gal/min	21/26	26/39	39/58	55/68	66/79	79/92	79/92	79/105	106/132	132/158
ROTATION OIL PRESSURE	Bar	60	140	140	140	140	140	140	140	140	140
ROTATION OIL PRESSURE	psi	870	2030	2030	2030	2030	2030	2030	2030	2030	2030
ROTATION OIL CAPACITY	l/min	20	30	30	30	60	60	60	60	60	60
ROTATION OIL CAPACITY	gal/min	5.2	8	8	8	16	16	16	16	16	16
OPERATING TOTAL WEIGHT	Kg	710	1200	1850	2200	2700	3270	4300	6500	8550	10945
OPERATING TOTAL WEIGHT	lbs	1565	2645	4078	4850	5952	7209	9480	14330	18850	24129.5

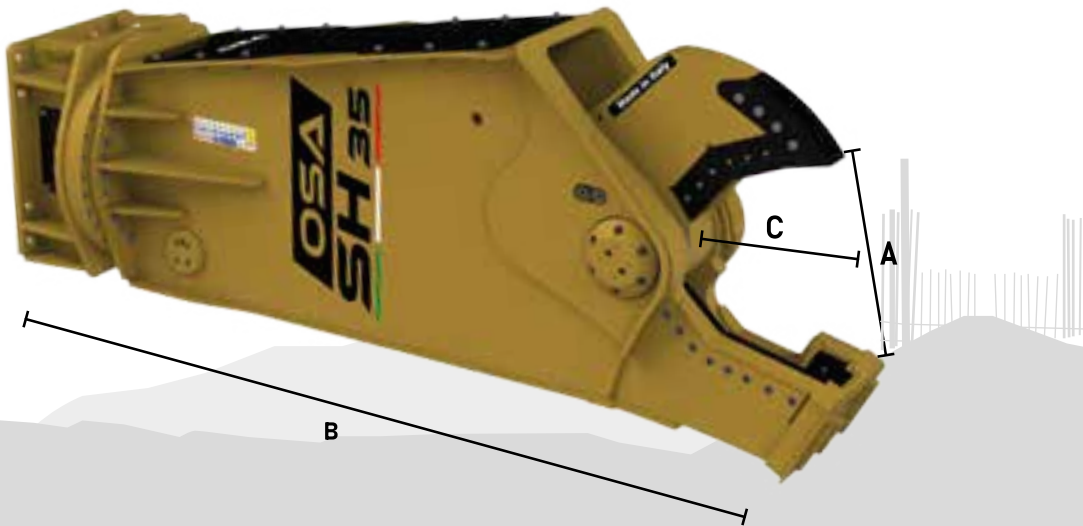


SERIE FPV I



MODEL	U.M.	FPV 6	FPV 12	FPV 17	FPV 20	FPV 30	FPV 45	FPV 60	FPV 100
OPENING (A)	mm	510	700	815	850	1040	1080	1130	1800
OPENING (A)	in.	20	27	32	34	41	42.5	44.5	71
LENGHT (B)	mm	1300	1920	2080	2300	2660	2700	2800	3200
LENGHT (B)	in.	51	76	82	91	105	106	110	126
WIDTH (P)	mm	330	400	460	550	560	600	760	950
WIDTH (P)	in.	13	15.75	18.1	21.65	22	23.6	29.9	37.40
EXCAVATOR WEIGHT	Ton	6/7	12/17	16/20	21/29	30/45	40/60	60/80	80/130
EXCAVATOR WEIGHT	lbs	12000/ 14000	24000/ 34000	36000/ 40000	42000/ 58000	60000/ 90000	80000/ 120000	120000/ 160000	160000/ 260000
EQUIPMENT WEIGHT	Kg	500	1100	1550	2050	2800	4500	5400	10400
EQUIPMENT WEIGHT	lbs	1102	2245	3417	4520	6173	9921	10803	22928
OIL PRESSURE	Bar	250	310	340	340	340	340	340	340
OIL PRESSURE	psi	3625	4495	4930	4930	4930	4930	4930	4930
OIL CAPACITY	l/min	80/100	180/220	200/240	220/300	300/350	300/350	400/500	500/600
OIL CAPACITY	gal/min	21/26	47/58	52/63	58/79	79/92	79/92	106/132	132/158

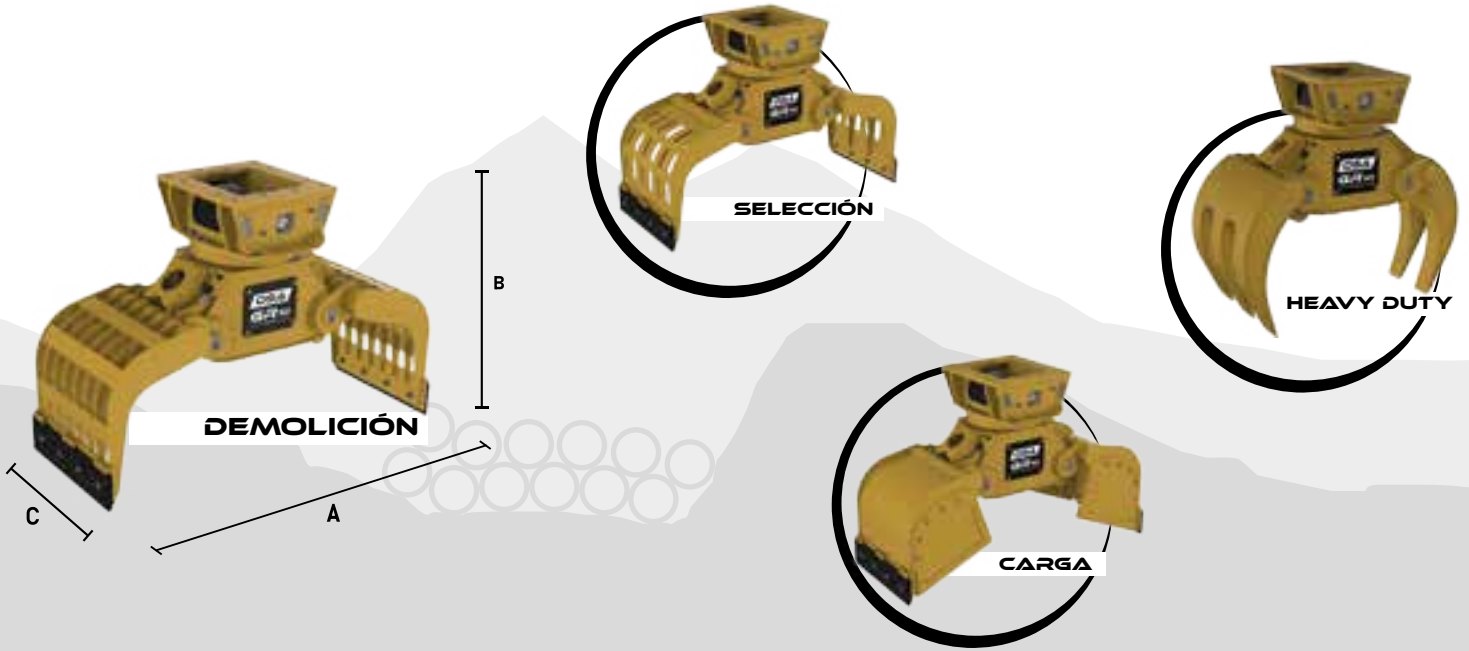




MODEL	U.M.	SH 6	SH 12	SH 20	SH 25	SH 35	SH 40	SH 55	SH 70	SH 80	SH 100	SH 120
OPENING (A)	mm	365	440	470	550	590	680	800	850	880	920	950
OPENING (A)	in.	14	17	19	22	23	27	31	33	35	36	37
LENGHT (B)	mm	1880	2450	3040	3060	3520	3660	4100	4700	4800	5000	5300
LENGHT (B)	in.	74	96	120	120	139	144	161	185	189	197	209
WIDTH (C)	mm	240	400	500	510	590	600	690	800	830	900	950
WIDTH (C)	in.	9	16	20	20	23	24	27	31	33	35	37
EXCAVATOR WEIGHT AT BUCKET PLACE	Ton	7/12	12/18	20/28	26/34	34/40	40/50	50/70	70/100	80/110	90/120	100/130
EXCAVATOR WEIGHT AT BUCKET PLACE	lbs	14000/24000	24000/36000	40000/56000	52000/68000	68000/80000	80000/100000	100000/140000	140000/200000	160000/220000	180000/240000	200000/260000
EXCAVATOR WEIGHT AT BOOM PLACE	Ton	4/7	7/10	14/18	16/22	22/30	26/35	30/45	45/60	50/70	70/90	90/110
EXCAVATOR WEIGHT AT BOOM PLACE	lbs	8000/14000	14000/20000	28000/36000	32000/44000	44000/60000	52000/70000	60000/90000	90000/120000	100000/140000	140000/180000	180000/220000
WEIGHT	Kg	640	1250	2030	2530	3200	3910	5630	6900	7800	9950	11500
WEIGHT	lbs	1411	2756	4475	5578	7055	8620	12412	15212	17196	21936	25353
OIL PRESSURE	Bar	250	310	340	340	340	340	340	340	340	340	340
OIL PRESSURE	Psi	3626	4496	4931	4931	4931	4931	4931	4931	4931	4931	4931
OIL CAPACITY	l/min	80/100	150/220	200/220	200/240	240/300	300/350	350/450	350/400	400/500	500/800	700/900
OIL CAPACITY	gal/min	21/26	40/58	53/58	53/63	63/79	79/92	92/119	92/106	106/132	132/211	185/238
ROTATION OIL PRESSURE	Bar	60	140	140	140	140	140	140	140	140	140	140
ROTATION OIL PRESSURE	Psi	870.23 64264	2030.52 8328	2030.52 8328	2030.52 8328	2030.52 8328	2030.52 8328	2030.52 8328	2030.52 8328	2030.52 8328	2030.52 8328	2030.52 8328
ROTATION OIL CAPACITY	l/min	20	30	30	30	60	60	60	60	60	60	60
ROTATION OIL CAPACITY	lbs	5	8	8	8	16	16	16	16	16	16	16
HYDRAULIC ROTATION	l/min	360	360	360	360	360	360	360	360	360	360	360
HYDRAULIC ROTATION	lbs	360	360	360	360	360	360	360	360	360	360	360



SERIE GR I



MODEL	U.M.	GR1	GR 3	GR 5	GR 7	GR 10	GR 15	GR 20	GR 25	GR 30	GR 40
OPENING (A)	mm	850	1050	1260	1750	2060	2145	2200	2430	2450	3000
OPENING (A)	in.	33.5	41	49.6	65	81.1	84.5	86.6	96	96.5	118
LENGHT (B)	mm	740	940	1107	1375	1400	1475	1475	1581	1650	2300
LENGHT (B)	in.	29	37	43.6	54	55	58	58	62	65	90
WIDTH (P)	mm	450	500	500	700	800	1000	1200	1400	1500	1500
WIDTH (P)	in.	17.5	20	20	27.5	31.5	39.5	47	55	59	59
EXCAVATOR WEIGHT	Ton	1.8/2.5	2.5/4	4/8	9/14	14/18	18/22	22/30	30/50	35/60	50/65
EXCAVATOR WEIGHT	lbs	3968/ 5510	5510/ 8820	8818/ 17636	19842/ 30864	30864/ 39683	39683/ 48502	48502/ 66139	66139/ 110231	77162/ 132277	110231/ 143300
EQUIPMENT WEIGHT	Kg	187	270	420	737	1060	1430	1787	2250	2680	3500
EQUIPMENT WEIGHT	lbs	412	595	926	1624	2336	3153	3940	4960	5908	7716
OIL PRESSURE	Bar	180	180	200	250	300	300	300	300	300	300
OIL PRESSURE	psi	2610	2610	2900	3626	4351	4351	4351	4351	4351	4351
OIL CAPACITY	L/min	25	25	25	50	80/100	80/100	80/100	80/120	120/140	150
OIL CAPACITY	gal/min	6	6	6	12	21/26	21/26	21/26	21/31	31/37	40
ROTATION OIL PRESSURE	Bar	50	50	50	60	140	140	140	140	140	140
ROTATION OIL PRESSURE	psi	725	725	725	870	2030	2030	2030	2030	2030	2030
ROTATION OIL CAPACITY	L/min	15	15	15	20	30	30	30	60	60	60
ROTATION OIL CAPACITY	gal/min	3.96	3.96	3.96	5.2	8	8	8	16	16	16
OPERATING TOTAL WEIGHT	Kg	195	300	480	810	1180	1550	1960	2475	2950	3900
OPERATING TOTAL WEIGHT	lbs	430	661	1060	1786	2600	3483	4321	5456	6500	8600



bema



Bema er et tysk kvalitetsprodukt der findes i 13 fejmaskine-modeller, og i en fejbredde fra 1,25 og til 5,0 meter, der kan opbygges efter kundens ønsker.

Så uanset hvilken rengøringsopgave der må forekomme, privat- gartneren- kommunen-entreprenøren- lufthavnen- stenbrudet- grusgraven eller landbruget, findes de korrekte maskiner til dette fra Bema, der har fremstillet maskiner i over 80 år.

Bema producere derudover også snepløve i 4 størrelser, samt ukrudtsbørster/mekanisk ukrudts bekæmpende maskiner, som alle kan opbygges efter kundens ønsker. Selvfølgelig i samme høje kvalitet som vores fejmaskiner.





"Selvom skovlen er 150 L større end min tidligere skovl, vejer den ca. 200 kg mindre. Skovlen føles stabil, og jeg oplever væsentligt mindre friktion og maskinen føles ikke så belastet som tidligere. Og eftersom, der ikke er slidplader på, hænger materialet ikke fast."

Mogens Jensen, maskinfører hos Aarsleff gennem 30 år

EN SKOVL ER IKKE BARE EN SKOVL

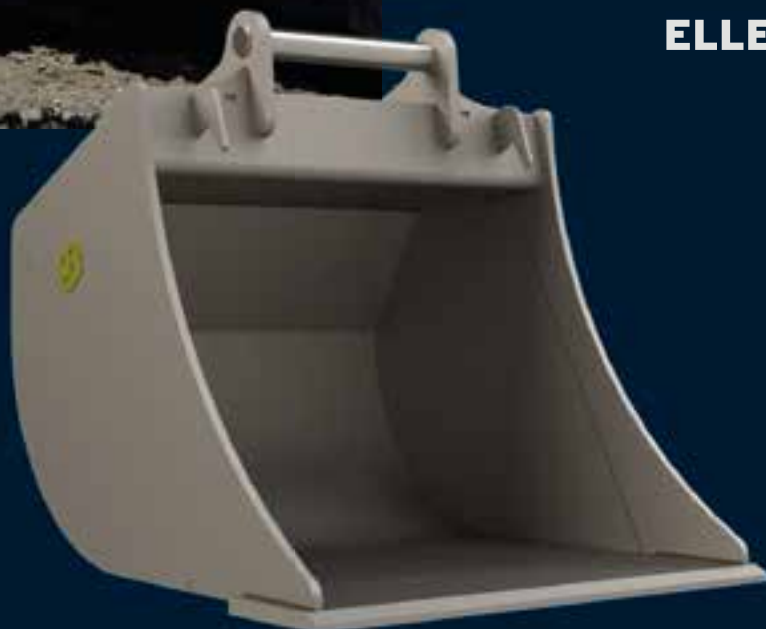
For de fleste entreprenører og maskinførere har valget af skovle traditionelt ikke haft særlig høj prioritet. Det er maskinen, der gør den store forskel. Og en skovl er vel bare en skovl?

Sådan var det en gang, men med de vægtoptimerede graveskovle fra Sjørring er det nu muligt at forbedre både produktivitet, rentabilitet og bæredygtighed. Og vel og mærket i en grad, der langt overstiger prisen på skovlen.

Hemmeligheden ligger i vores unikke kombination af lav vægt og høj styrke. De nye graveskovle fra Sjørring er nemlig fremstillet i Hardox højstyrkestål og er samtidig designet, så alt overflødig er minimeret eller helt fjernet.

Resultatet er graveskovle, du vil elske at arbejde med, både som maskinfører og økonomiansvarlig.

**KONTAKT DIN LOKALE FORHANDLER
ELLER SE MERE PÅ SJORRING.COM**



SJØRRING 
IN FRONT



Denne Hidromek 145 LCSR grave-maskine er udstyret med Q-Safe QS60 hurtigskift, derunder er der monteret en EC219PS-QSM60Q-QS60 aftagelig tiltrotator med indbygget rotations-sensor og highflow svirvel, samt støbt og modular opbygget underdel, som giver mindre vedligehold og færre nedbrud

Den er yderligere monteret med en GRD20Q aftagelig gribekassette med quicklås, for hurtig og enkel til- eller frakobling.

Maskinen er udstyret med DC2 styresystem, som i MIG2 joystick muliggør op til 6 proportionelle funktioner på samme tid, og op til 14 funktioner i tryknap-

per. På maskinen er der tilt, rotation, gribeklo, båndstyring og hammerudtag på armen, alt sammen på en gang, uden nogen form for omskifter. DC2 giver mulighed for både app- samt fjernsupport, begge dele er standard. DC2 understøtter også maskinstyringssystemer som fungerer med auto tilt og rotation.

”

Vi har altid brugt engcon, og en maskine af den størrelse skal have en tiltrotator, ellers er den ikke effektiv!” Det var den første sætning Anders Uhrenholt kom med, da han blev spurgt om, hvorfor de havde valgt engcon tiltrotator på deres nye Hidromek 145 LCSR.

Vi er meget tilfreds med den måde tiltrotatoren og maskinen arbejder sammen på. Vi har aldrig haft andet på vores maskiner.

Grunden til vi har valgt endnu en Hidromek 145 LCSR er, at det er en stærk kompakt lille maskine, der klarer opgaverne. engcon tiltrotatoren er en vigtig del af maskinens alsidighed!

Vi er meget glade for at arbejde sammen med KSM-Maskinservice, de kommer altid når vi har brug for dem og de forstår vigtigheden af god service.

Anders Uhrenholt,
Uhrenholt Maskinstation





Proven Landscape Technology

Follow us @BomfordTurner



Bredt udvalg af armklippere, til proffessionelt brug

- Rækkevidde 3-9m
- Mulighed for Variabel Fremført Arm (VFA)
- Mulighed for at arbejde både højre og venstre
- Stærk og robust konstruktion
- Udvalg af front og bagmonterede
- PTO eller Hydraulisk drift
- Flere forskellige muligheder for elektronisk styring



Landscape



Forestry



Cultivation



Remote



Proven Landscape Technology

Follow us @BomfordTurner



Altid et stort udvalg af redskaber til armklippere på lager

- Stærk konstruktion af klippehoveder
- 0,9m-2m effektiv arbejdsbredde
- Andre redskaber til påmontering på bl.a. Armklippere, Grøfterensere, Grensave, Hæksnitter, Fingerklipper/Grensaks, Rotorklippehoveder (med kæder), Klippehovede m. Opsamling
- Bredt udvalg af slagler

Kontakt os for mere info

Tel +45 40358971

E-mail obuhl@bomford-turner.com

Website www.bomford-turner.com



Landscape



Forestry



Cultivation



Remote



Proven Landscape Technology

Follow us @BomfordTurner



Bomford Turner tilbyder en bred vifte af produkter til skov og naturpleje

- Knusere m. faste eller roterende tænder til traktor eller gravemaskine montering str. Fra 0,8-2,5m arbejdsbredde
- Rotorklippere, m. kæder, til traktor eller gravemaskine montering
- Triwing rotorklippere til landskabspleje
- Slagleklippere i forskellige udgaver



Landscape



Forestry



Cultivation



Remote



Proven Landscape Technology

Follow us @BomfordTurner



Jordbearbejdning

Dyna Drive friktionsharven

- Arbejdsbredde 1,6-6,5m
- Høj effektivitet/arbejdshastighed
- Til fritlægning af ukrudt, bl.a. kvikrødder
- Nedmuldning af efterafgrøder
- Giver jævne marker
- Selvrensende effekt fra overlappet imellem rotoror
- Stærk og robust konstruktion

For mere specifik info, kontakt os venligst

Tel +45 40358971

E-mail obuhl@bomford-turner.com

Website www.bomford-turner.com



Landscape



Forestry



Cultivation



Remote



Proven Landscape Technology

Follow us @BomfordTurner



Flailbot til naturpleje

samt pasning af skråninger, regnvandsbassiner o.lign

- Stærk konstruktion
- Mulighed for udskydelig undervogn
- Høj ydeevne
- Bredt udvalg af redskaber som f.eks Græsklippehovede, Bushmaster knuser hovede, Knuserhovede med faste tænder, Stubfræser, og meget andet

Kontakt os ved yderligere interesse, og få specialbrochure på produktet

Tel +45 40358971

E-mail obuhl@bomford-turner.com

Website www.bomford-turner.com



Landscape



Forestry



Cultivation



Remote

KONTAKT OS 24-7



Servicebilerne kører i hele Danmark og kan kontaktes 24-7, det er sådan vi servicerer vores kunder bedst.

Vi udfører:

- **Service og reparation af alle entreprenørmaskiner**
- **Reparation af hydraulik**
- **Service og eftersyn**
- **Renovering af store og små maskiner**
- **Års- og sikkerhedseftersyn**

Kontakt service på:

+45 7020 5008 eller frederik@ksm-gruppen.com

Vi har altid mange reservedele på lager og de kan bestilles på +45 7020 5008 eller reservedele@kms-gruppen.com

Samarbejdspartnere:



KSM-Maskinservice ApS

Skovgyden 1
DK-5540 Ullerslev
ksm-maskinservice.com

