

# Nova

S E R I E S



Nova x20 | Nova x30 | Nova x40

**Neomach**





# WE PUSH YOUR WORK FURTHER

Born from the constant research, development and technological innovation, Neomach has created the new Nova series of multifunctional machines. Compact in their size but mighty in their work, the Neomach Nova series of miniloaders are the heroes of modern versatility.

With their sturdy structure but small footprint, they move with agility over any terrain, combining power and flexibility for a wide range of applications. Thanks to the availability of multiple accessories, the Nova series maximizes productivity whilst reducing costs, thus transforming everyday work into an elegant dance of precision and ingenuity.



# AN ESSENTIAL PARTNER

Neomach offers new solutions today whilst thinking of new ones for tomorrow. The target is to become a strategic, indispensable partner for customers.

In the important field of greencare and daily stable/soil maintenance tasks, our machines are designed to work strongly, precisely and easily and at the same time to ensure quick and safe performance in every situation.

On construction sites for material handling activities, where efficient management of goods and materials is essential, Neomach is your best ally to maximise the productivity of every operation. Our products are designed to support professionals in their work, side by side, enhancing their performance and efficiency.







# AWARDED WITH THE GERMAN DESIGN AWARD



The Nova series represents the next level in the panorama of multifunction miniloaders because it has been developed with an innovative and revolutionary approach. Thanks to a reconsideration of the functional components and to the patented platform, this machine offers maximum visibility, durability and reduction of vibrations and noise. The floating cab provides unprecedented driving comfort, while unrivaled technical performance in its segment ensures a superior operating experience.







# YOUR ALL-SEASON PARTNER

Meadows to maintain in spring. Hay to handle in summer. Leaves to collect in autumn. Snow to clear in winter. They are only a few of the tasks that every farmer or gardener faces throughout the year.

Urban and extra-urban areas, sports facilities, parks and public gardens: every municipality has countless spaces that require constant maintenance all year round, sometimes emergency interventions that require flexibility at low cost.

Within this framework Neomach replaces an entire fleet of single-function machines thanks to its interchangeable attachments, helping the operators to reduce their maintenance, storage and labor costs, whilst guaranteeing an optimal level of service and a timely response to emergencies.











# SIMPLE AND PRECISE

## ***MULTIFUNCTIONAL JOYSTICK***

Standard equipment. The Nova's joystick gives the operator the possibility to control most of the machine's operations in an immediate, intuitive way. The controls are ergonomically positioned allowing the various functions to be activated comfortably.



## ***OIL FLOW MEMORISATION***

Another standard feature is the ability to memorize the hydraulic oil flow for attachments. The required oil flow can then be recalled for future operations, making it easier for the operator.



# PROPORTIONAL HYDRAULIC SYSTEM

Nova is the first machine in its class to offer a proportional hydraulic system. Through the joystick, the driver has full control of every operation and can count on a device capable of performing movements with extreme precision.

Working with a proportional system means being able to choose with extreme sensitivity the speed of movements, both to lift and to extend the telescopic boom. The work gets more precise and less stressful for the operator, who has full control of the boom's performance.

The proportional system is fitted as standard, controlled by a high-quality, fully hydraulic distributor, designed specifically to ensure accuracy and reliability.



The hydraulic circuit has a continuous oil flow system of 43 lt/min at 200 bar available for boom and attachments, multiconnector with 1 double acting circuit, 1 oil reflow, 1 7-pin socket for 1 electric actuator + 1 electric continuous control (features both of Nova X30 and Nova X40).

## ***HYDRAULIC MULTICONNECTOR***

Designed to be effortless, the multiconnector makes connecting hydraulic attachments simple, clean and fast. The quick coupling takes seconds, using minimal effort whilst reducing leakages, pressure problems, dirt, and avoiding damage or contamination of the hydraulic circuit, simplifying the operation and reducing maintenance costs.







## ***LIFTING CAPACITY***

Nova sets the new standard for the 26 hp multifunctional segment. Thanks to the combined study of design, mechanics and hydraulics, the brand new model Nova X40 lifts up to 1,200 kg up to 1 Mt. and has a tipping load of 1,400 kg.

## ***FLOATING BOOM***

The Neomach Nova's versatility is further enhanced by the floating boom feature which is fitted as standard on the X30 and X40 models. The advantage in terms of performance is immediately noticeable: the attachment perfectly follows the course of the ground, giving greater freedom of control to the operator and making more efficient and precise all the soil-related tasks, while also avoiding damage to the attachment.



# ERGONOMICS AND COMFORT

"Work better" is one of the core concepts of Neomach machines. The aim is to facilitate the operator in the machine's daily use, as well as to provide new driving comfort solutions.





THE ONLY MULTIFUNCTIONAL  
MACHINE WITH A PLATFORM ON  
SILENT-BLOCKS

Neomach's patented silent-block suspension platform alleviates the driver's seat from stressful vibrations from the chassis and ground. This feature, unique in this category of vehicles, enables the operator to use the machine for much longer without fatigue, making its



use more pleasant and increasing the number of working hours without unnecessarily straining the driver. As a result the operator's concentration improves, with more consistent performance over time and increased safety.

Tubular steel canopy, Canopy  
ROPS-FOPS certified, with high  
visibility design

Adjustable steering column



Integrated backweights for optimisation  
of the overall dimensions



Standard seat in synthetic leather with  
safety belt, heating and presence sensor.  
Seat with spring suspension is fitted as  
standard in the Nova X40 model.



Digital display with sensors for all  
the main functions.





## FULL VISIBILITY

The driving position has been designed to ensure maximum visibility at 360°, especially in the front.

A wide front view is granted by the central boom with low-encumbrance hoses and cylinders. As a result, the operator has the attachments and front wheels in full sight without having to lean out.



The polycarbonate rooftop window (option) frees the upwards view further, ensuring the operator full visibility of loading even during lifting.

# SAFETY IS OUR STANDARD

## THE SAFEST



The Nova is equipped with safety features to prevent hazards and accidents. The presence sensor in the seat locks the booms movement when no operator is on board or when the machine is switched off, so as to prevent any hazard caused by accidental touching of the joystick and subsequent boom descent.

The hydraulic flow to the attachment is also locked when the operator is not in the cab, to prevent accidents and injuries.





# Nova<sup>x20</sup>

Nova X20 is the entry-level multifunctional machine for those looking for versatility and low operating costs. Its lightness, small size and telescopic arm allow the use of the main equipment and maximum ease of use.

Engine	
Engine	Yanmar 3TNV76
Displacement	1.116 cc STAGE V
Power	26 hp @ 2800 RPM
Max. speed	12 km/h
Cooling	Combined cooler for hydraulic oil and engine cooling liquid



Machine	
Transmission	4WD hydraulic transmission, 1 hydr. Pump, 4 wheel motors
Hydraulic flow	33 l/min at 200 bar
Tires	standard tires: 23x10.50-12 agri profile
Driving space	platform suspended on silent blocks; ergonomic joystick linked to the seat, high 360° visibility

Standard equipment	
Central telescopic boom w/low encumbrance, max lifting height 2790 mm. Tipping load 1000 kg - Lifting capacity 800 kg	
Floating boom, self-levelling, differential lock available as option	
1 additional D.A. circuit, hydraulic multiconnector available as option	
First pair backweights (2 x 50 kg) Second pair backweights (2 x 50 kg)	
2 LED front working lights	

Size and weight	
Dry weight	± 1350 kg
Sizes	min. H 1980 mm - W 980 mm - L 2490 mm



# Nova<sup>x30</sup>

Nova X30 is the new multifunctional machine that revolutionizes this segment's standards. Cutting-edge equipment and the compact size grant efficiency, maneuverability, visibility and comfort, as well as a wide range of attachments for the majority of work situations both professional and private.

Engine	
Engine	Kubota D1305 E4B
Displacement	1.261 cc STAGE V
Power	26 hp @ 2600 RPM
Max. speed	12 km/h
Cooling	Combined cooler for hydraulic oil and engine cooling liquid



Machine	
Transmission	4WD hydraulic transmission, 1 hydraulic pump, 4 wheel motors
Hydraulic flow	43 l/min a 200 bar
Tires	standard tires: 23x10.50-12 agri profile
Driving space	platform suspended on silent blocks; ergonomic joystick linked to the seat, high 360° visibility

Standard equipment	
Central telescopic boom w/low encumbrance, max lifting capacity height 2860mm, tipping load 1240 kg, lifting capacity 1080 kg	
Floating boom, self-levelling, differential lock and anti-cavitation valve	
Hydraulic multiconnector – 1 double acting circuit + 1 oil reflow	
Integrated standard backweights (2 x 50 kg) additional backweights (2 x 50 kg)	
2 LED front working lights + 1 rear	

Size and weight	
Dry weight	± 1610 kg + 100 kg additional backweights
Sizes	min. H 1980 mm – W 980 mm – L 2530 mm



# Nova<sup>x40</sup>

Nova X40 is the flagship model of the Nova series. It's designed and developed for those who need even more performance. The powerful diesel engine and larger hydraulic wheel motors increase the pushing power while the long-stroke telescopic arm allows for increased height and lifting capacity. This makes the Nova x40 the most powerful, innovative and practical multifunctional miniloader in its class.

Engine	
Engine	Kohler KSD1403
Displacement	1.391 cc STAGE V
Power	26 hp @ 2600 RPM
Max. speed	12 km/h
Cooling	Combined cooler for hydraulic oil and engine cooling liquid



Machine	
Transmission	4WD hydraulic transmission, 1 hydraulic pump, 4 wheel motors
Hydraulic flow	43 l/min a 200 bar
Tires	Standard tires: 26x12.00-12 agri profile
Driving space	platform suspended on silent blocks; ergonomic joystick linked to the seat; high 360° visibility

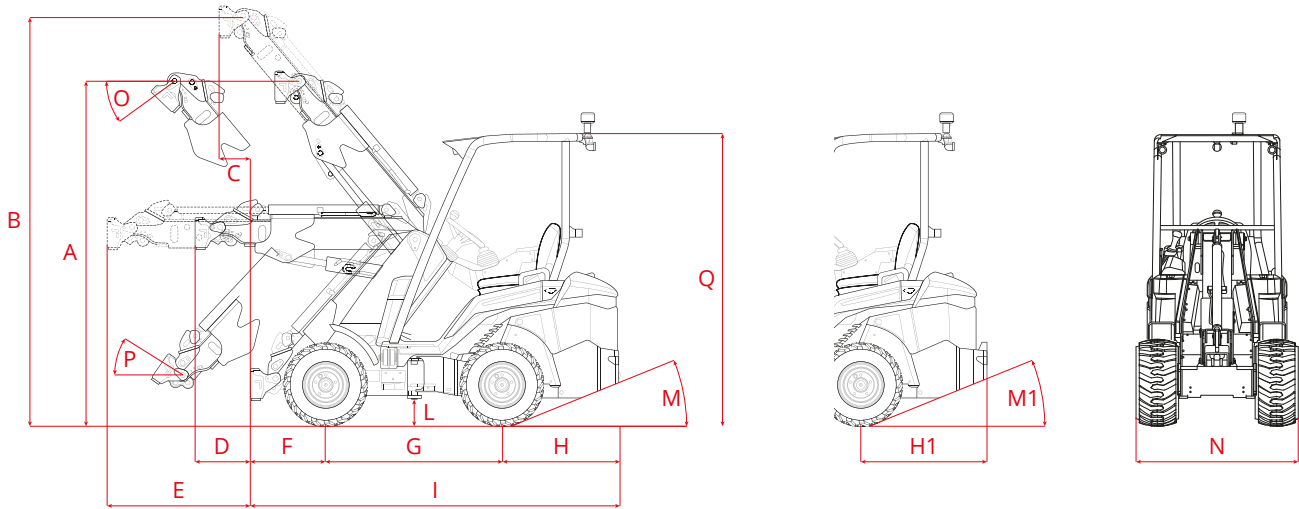
Standard equipment	
Central telescopic boom w/low encumbrance, max. lifting height 3000 mm. Tipping load 1400 kg – Lifting capacity straight 1200 kg	
Floating boom, self-levelling, differential lock and anti-cavitation valve	
Hydraulic multiconnector – 1 double acting circuit + 1 oil reflow	
Integrated standard backweights (4 x 50 kg) additional backweights (+150 kg)	
2 LED front working lights + 1 rear	

Size and weight	
Dry weight	± 1820 kg + 150 kg additional backweights
Sizes	min. H 2038 mm – W 1200 mm – L 2620 mm



COMPACT DIMENSIONS

The market requires high-performance machines with small dimensions, suitable for working in narrow spaces: stables, sidewalks, gardens, construction sites.



Nova is a supercompact machine with performance exceeding the current market standards. Having the dimensions to be able to access narrow sites has led to designing one of the most compact machines in its category, but with a performance worthy of the larger series.



Details such as integrated backweights and the foldable rotating beacon help keep the overall size of the machine to a minimum.

		Nova x20	Nova x30	Nova x40
A	Height at pin (boom not extended, standard wheels)	2348 mm	2350 mm	2470 mm
B	Height at pin (boom extended, standard wheels)	2810 mm	2860 mm	3000 mm
C	Max overhang w/boom lifted (extended)	266 mm	185 mm	166 mm
D	Max overhang w/horizontal boom (not extended)	425 mm	390 mm	342 mm
E	Max overhang w/horizontal boom (extended)	1025 mm	990 mm	1025 mm
F	Front overhang	481 mm	545 mm	616 mm
G	Wheelbase	1200 mm	1200 mm	1200 mm
H	Rear overhang	783 mm	800 mm	804 mm
H1	Rear overhang w/ backweights	861 mm	861 mm	901 mm
I	Length of the machine	2479 mm	2530 mm	2620 mm
L	Ground clearance (with standard wheels)	180 mm	180 mm	225 mm
M	Angle of departure	20°	20°	20°
M1	Angle of departure w/backweights	20°	20°	20°
N	Width of the machine (with standard wheels)	1070 mm	1070 mm	1220 mm
O	Unloading angle	37.5°	36,5°	34°
P	Loading angle	30°	32°	37°
Q	Height (with standard wheels)	1985 mm	1985 mm	2025mm

Tires	Nova x20			Nova x30			Nova x40		
	Height	Width	Lft. Height	Height	Width	Lft. Height	Height	Width	Lft. Height
23x10.50-12	1985 mm	1070 mm	2840 mm	1985 mm	1070 mm	2825 mm	1985 mm	1070 mm	2960 mm
23x8.50-12	1985 mm	980 mm	2840 mm	1980 mm	980 mm	2820 mm	1985 mm	980 mm	2960 mm
26x12.00-12	2025 mm	1220 mm	2860 mm	2020 mm	1220 mm	2860 mm	2025 mm	1220 mm	3000 mm
27x8.50-15	n.d.	n.d.	n.d.	n.d.	n.d.	n.d.	2045 mm	980 mm	3020 mm



TIRES



**Agri profile**

23x10.50-12

standard on Nova x20 and Nova x30



**Skid profile**

23x8.50-12



**Garden profile**

23x8.50-12



**Garden profile**

23x10.50-12



**Agri profile**

26x12.00-12

standard on Nova x40



**Skid profile**

26x12.00-12



**Garden profile**

26x12.00-12



**Skid profile**

27x8.50-15

OPTIONS



**Wheel brackets**

Wheel brackets kit for transport - 2 Pcs



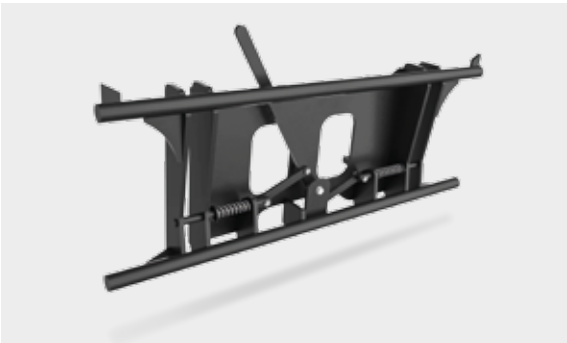
**Rear Bullbar**

Rear and side protection against bumps



**Adapter**

Adapter coupling plate for attachments



**Euro adapter**

Euro adapter coupling plate for attachments

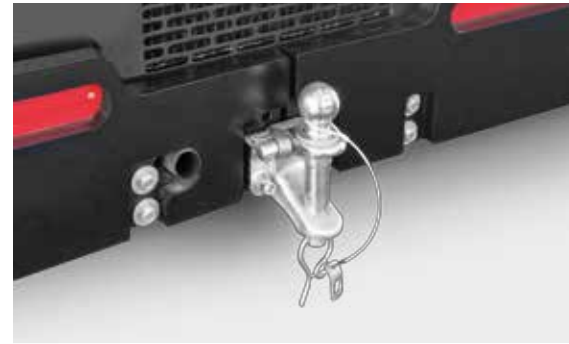


## OPTIONS



### ***Additional backweights***

100 kg + 100 kg for Nova x20  
100 kg for Nova x30  
150 kg for Nova x40



### ***Trailer Hitch***

Homologated for use in road transit



### ***Rooftop***

Rooftop window in 10 mm polycarbonate - FOPS-certified



### ***Beacon***

Foldable rotating beacon



### ***Additional hydraulic system 1 D.A.***

1 additional double-acting circuit + 1 electric control



### ***Additional hydraulic system 2 D.A.***

2 additional double-acting circuits + 1 electric control



### ***Seat with spring suspension***

Adjustable, with head & armrest, presence sensor and safety belt with retractors



### ***Side glovebox***



## OPTIONS



### ***NovaCab Cabin** the quietest in its category*

Closed cabin on a 6-bracket butterfly profile with heating, front windscreen, triple rear glasses, opening left-sided window, right-sided access door with anti-breaking foldable lower section, rooftop window in polycarbonate, comfort mat, courtesy light, windscreen wiper. Rops/fops certified.

## OPTIONS





## OPTIONS



### ***Canopy NovaPlus***

Canopy on a 6-bracket butterfly profile with front windscreen, triple rear glasses, rooftop window in polycarbonate, comfort mat, courtesy light, winscreen wiper. Retrofittable even after the production if needed at a later time the left-sided door and the right-sided window to be added.

## OPTIONS





OPTIONS



**Road transit kit**

Road lights, turn signals, reverse beeper, foldable beacon, L-R rearview mirrors, rear plate holder, rear 7 pin socket



**LED stripes**

3 LED working light stripes - 2 front, 1 rear  
1710 Lumen, in addition to the standard ones



**Mirrors**

Pair of rearview mirrors L/R



**Double USB Socket**

12V + Double USB Socket



**Beeper**

Reverse beeper alert



**Comfort mat**

For canopy - included in cab version

OPTIONS





# ATTACHMENTS

Matching the correct attachment is essential for optimal use of the machine. Neomach manages their attachments carefully ensuring that they are a high-quality tool which will enhance the overall performance of the machines.

Neomach strives to supply the best attachments for operators over multiple sectors.



STANDARD BUCKET



Available in different widths, the Neomach standard buckets can be installed with quick connection and are suitable for a wide range of uses, facilitating the handling of common material thanks to their conical shape, the inner surface obstacle-free, side openings for edge visibility, welded blade in hardox and rounded sides. Removable teeth available as an option.

Mod.	Code	Width	Depth	Height	Weight	Volume
Standard bucket 980 mm	214020010	980 mm	672 mm	612 mm	64 kg	190 lt
Standard bucket 1050 mm	214020005	1050 mm	672 mm	612 mm	68 kg	208 lt
Standard bucket 1150 mm	214020001	1150 mm	672 mm	612 mm	72 kg	230 lt
Standard bucket 1300 mm	214020004	1300 mm	672 mm	612 mm	78 kg	264 lt
Removable Teeth For Bucket	214990101					

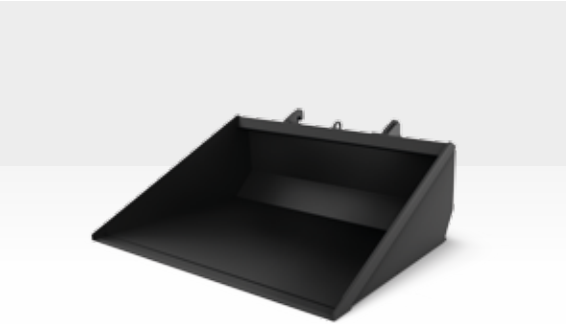
HIGH VOLUME BUCKET



It is manufactured and designed for light and bulky loads such as seeds, grains, feed etc, the Neomach high volume bucket features a larger load area if compared to a standard type and hence it is reinforced by internal brackets. In order to facilitate the loading, the high volume bucket has rounded sides.

Mod.	Code	Width	Depth	Height	Weight	Volume
High volume bucket 1300 mm	214020008	1300 mm	907 mm	834 mm	120 kg	650 lt
High volume bucket 1500 mm	214020009	1500 mm	907 mm	834 mm	129 kg	760 lt

LEVELLING BUCKET



With an exceptionally sturdy design, the Neomach levelling bucket is a great tool for leveling materials both on the front and on the rear side. The driver will have clear view up to the edge of the tool.

Mod.	Code	Width	Depth	Height	Weight	Volume
Levelling bucket 1300 mm	214020011	1300 mm	975 mm	443 mm	90 kg	280 lt

4-1 BUCKET



As its name suggests this bucket proves its versatility in 4 different operations: charging, gripper, leveler and scraper. With an opening angle of 120° the Neomach bucket 4 in 1 is the ideal equipment for those who have to perform different tasks being controllable directly from the driving seat, hence optimizing timing for replacement and working. Removable teeth available as an option.

**Connection required:** Multiconnector

Mod.	Code	Width	Depth	Height	Weight	Volume
4-1 Bucket - 1050 mm	214100032	1050 mm	661 mm	475 mm	137 kg	230 lt
4-1 Bucket - 1150 mm	214100033	1150 mm	661 mm	475 mm	144 kg	260 lt
4-1 Bucket - 1300 mm	214100001	1300 mm	661 mm	475 mm	155 kg	280 lt
Removable Teeth For Bucket	214990101					



HIGH TIP BUCKET

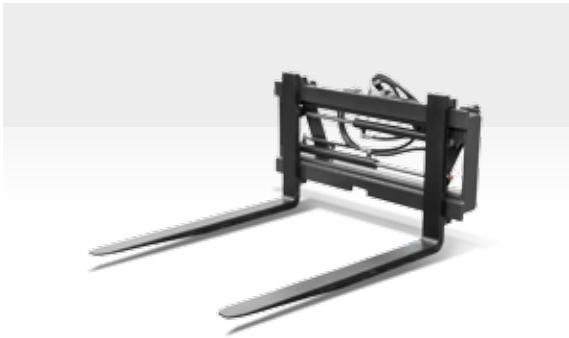


The Neomach high tip bucket is ideal for those who need to reach points higher and distant from the machine. Being equipped with a hydraulic cylinder that tilts the bucket on its front side, it manages in reaching a tipping height significantly higher than a standard bucket featuring an hydraulic cylinder that tilts the bucket on its front side, it manages in reaching a tipping height significantly higher than a standard bucket.

Connection required: Multiconnector

Mod.	Code	Width	Depth	Height	Weight	Volume	Compatibility
High tip bucket	214100035	1200 mm	755 mm	655 mm	150 kg	350 lt	Nova x40 (recommended)

PALLET FORKS W/ CENTRE SHIFT

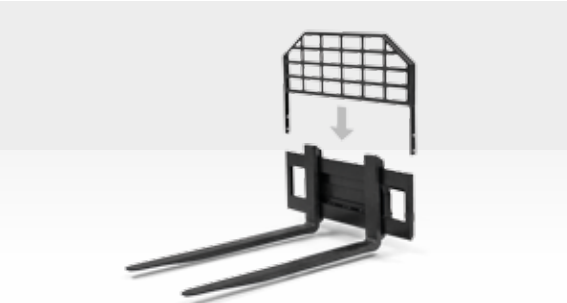


Thanks to the hydraulic on the Neomach pallet forks with center shift it's easily possible to open, close and even move laterally the forks from the driver's seat. This equipment is fitted with a very robust rear frame that allows the handling even of the heavier loads.

Connection required: Multiconnector

Mod.	Code	Max width	Length	Load capacity	Weight
Pallet forks w/ centre shift	214100036	1200 mm	1100 mm	2500 kg	240 kg

PALLET FORKS KIT



The Neomach pallet forks kit is an excellent equipment for handling loads as the forks are adjustable thanks to its quick locking mechanism. It gives the operator full visibility and improves the ease of use and work accuracy of the job in narrow spaces and on difficult terrain if compared to a conventional lift. Protection available as an option, it shelters the operator from any load drops.

Mod.	Code	Width	Length	Load capacity	Weight
Kit forks w/ frame FEM 1	214030101	1200 mm	1100 mm	1000 Kg	100 kg
Kit forks w/ frame FEM 2	214030102	1200 mm	1100 mm	1800 Kg	145 kg
Rear protection for pallet forks	214030201				

BIG BAG LIFTER



The Neomach big bag lifter facilitates lifting, stacking and transport operations of large bags containing fertilizers, feed and other grainy materials, absolutely safe and risk-free.

Mod.	Code	Load capacity	Weight
Big bag lifter	214100012	1100 kg	105 kg



BALE FORK W/ 3 TEETH



The Neomach 3-teeth bale fork is the ideal tool for handling hay bales inside stables and barns, in open fields or for loading onto trailers. Its simple structure ensures a long durability and strength, the forklift teeth can be easily replaced in case of wear.

Mod.	Code	Width	Teeth length	Load capacity	Weight
Bale fork w/ 3 teeth	214100805	920 mm	700 mm	700 kg	40 kg

FORK W/ GRAPPLE



The fork with grapple is the ideal tool for those ones who need to work with material loads that cannot be loaded and carried with a bucket or normal forks type like pruning residues, hay, manure, etc. The hydraulic cylinder in the coupling facilitates the considerable load performance. The width of 1100mm makes it the ideal equipment for working in narrow spaces.

**Connection required:** Multiconnector

Mod.	Code	Width	Teeth length	Weight
Fork w/ grapple	214100804	1100 mm	700 mm	150 kg

XL BALE FORK W/ 2 FOLDABLE TEETH



The Neomach bale fork XL with 2 foldable teeth is an equipment used for silage handling and hay bales in fields, for gathering them and loading them onto trailers. It fits 2 foldable teeth suitable for the transport, which can be easily replaced in case of wear or damage.

Mod.	Code	Width	Teeth length	Load capacity	Weight
XL Bale fork w/ 2 foldable teeth	214100802	860 mm	1400 mm	800 kg	80 kg

BALE GRAPPLE



The Neomach bale grapple is used for loading and handling of hay bales, silage, etc. and it helps prevent any damage to the wrapping, thus managing to stack the bales one on top of the other.

**Connection required:** Multiconnector

Mod.	Code	Max ø bale	Load capacity	Weight
Bale grapple	214100806	1200 mm	700 kg	173 kg



SCRAPER BLADE



Mainly used inside stables for the hay in the cattle feeder. The Neoamch blade slide pusher with floating attachment can be also used for cleaning floors at agricultural buildings from handling residues. The profile scraper is specially designed not to ruin the flooring.

Mod.	Code	Width	Height	Max inclination	Weight
Scraper blade 1600 mm	214100812	1600 mm	500 mm	30°	133 kg
Scraper blade 12000 mm	214100809	2000 mm	500 mm	30°	146 kg
Hydraulic rotation for scraper blade	214100807				

ROTARY SWEEPER



This equipment is suitable for cleaning external surfaces from greenery, mud etc. It can also be used as a snowplough. It is suitable for the use in the urban environments as its compact sizes grant it to go on pavements and parking areas. The brush with hydraulic rotation, adjustable from the driver's seat, is fitted with floating system, which always maintains a continuous pressure to the ground following the irregularities of the ground.

**Connection required:** Multiconnector + Additional double acting circuit 1 D.A.

Mod.	Code	Max work width	Work width at 25°	Brush	Weight
Rotary sweeper	214100201	1500 mm	1410 mm	ø 500 mm	140 kg

SWEEPER W/ BUCKET



The Neomach sweeper with bucket is used in municipal and in large areas for cleaning, collecting, unloading dirt and debris thanks to the bucket applied. It is suitable to be used also in farms and in the construction field in general to remove debris even if extra sized.

**Connection required:** Multiconnector

Mod.	Code	Max work width	Brush	Weight
Sweeper w/ bucket	214100212	1600 mm	ø 560 mm	370 kg

SWEEPER W/ BUCKET AND W/ WASHING KIT



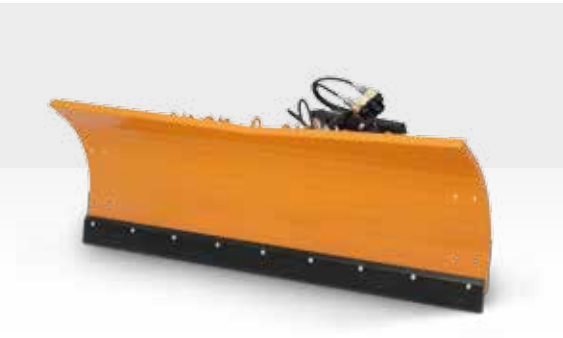
The Neomach sweeper with bucket is suitable for outdoor urban areas and also inside agricultural buildings for cleaning floors. It is equipped as standard with rubber side guards, steel mixed polypropylene sectors, hoses and a hardened-steel double-bevel blade. The transmission is direct and the hydraulic motor is directly connected to the rotor. Washing kit available as optional.

**Connection required:** Multiconnector

Mod.	Code	Max work width	Work width at 25°	Brush	Weight
Sweeper w/ bucket	214100210	1100 mm	1010 mm	ø 420 mm	170 kg
Washing kit					



SNOW BLADE



The Neomach snow blade is ideal for removal large-scale snow for professional use. It is used in municipality for clearing roads, parking lots, squares and to clear paths, courtyards or domestic squares thanks to its compact sizes. It is fitted with a shockproof system to protect both the tool and the vehicle from accidental collisions.

**Connection required:** Multiconnector

Mod.	Code	Width	Height	Max inclination	Weight
Snow blade	214100207	1750 mm	600 mm	±30°	140 kg

SNOW THROWER



Thanks to its particularly compact dimensions, the Neomach two-stage snow thrower can be used inside small to narrow spaces, where the snow removal is not possible with conventional equipments. It is equipped with a laterally adjustable outlet and inside the slope of snow throwing.

**Connection required:** Multiconnector + additional double acting circuit 2 D.A.

Mod.	Code	Max work width	Weight
Snow thrower 1100 mm	214100214	1100 mm	110 kg
Snow thrower 1200 mm	214100214	1200 mm	120 kg

SNOW PLOUGH



It is a multi-purpose tool aimed at removing the snow, composed by two independent blades, it is equipped with a spring release mechanism that avoids any impact to the blades in the event of collisions with possible frozen objects in the working area. The blades of the Neomach snow plough are hydraulically adjustable and their angle can be controlled from the driver's seat.

**Connection required:** Multiconnector

Mod.	Code	Width	Height	Max inclination	Weight
Snow plough	214100213	1330 - 1510 mm	750 mm	±30°	141 kg

SALT SPREADER



The Neomach trailed salt spreader is equipped with a conical steel hopper, seamless and hot-dip galvanized. It has a high and articulated shaker, with flange in rubber. Disc distributor with 4 vanes and dispenser in stainless steel, cast iron multiplier. Dosing opening with manual lever and 2 adjustable twine limiter at 6 meters.

Mod.	Code	Capacity	Weight
Salt spreader	214100216	73 lt	45 kg



FLAIL MOWER



The Neomach flail mower is ideal for the mowing of tall grass and bushes on meadows, roadbanks, construction sites etc. The design of its cutting system improves the performance by reducing the effort of the motor and the hydraulic system. The drive is direct thanks to the hydraulic motor fitted directly on the rotor. The floating system, the rear roller and the slides allow the mulcher to perfectly follow the ground. Rear roller and side slides improve stability and operation.

**Connection required:** Multiconnector

Mod.	Code	External width	Cutting width	Weight
Flail mower	214100709	1450 mm	1300 mm	172 kg

LAWN MOWER



Equipped with 3 blades that ensure a uniform and precise cut, Neomach mower plate is the ideal equipment for mowing gardens, lawns, sports fields and large surfaces. Robust design and belt drive guarantee high strength and working life while the floating system and the 4 height adjustable wheels, allow the mower plate to adapt to irregularities of the ground. The discharge takes place at the rear.

**Connection required:** Multiconnector

Mod.	Code	External width	Cutting width	Weight
Lawn mower	214100708	1590 mm	1380 mm	197 kg

INTER-ROW LAWNMOWER



The Neomach hydraulic inter-row lawnmower is the ideal equipment for cutting grass around trees, fences, rows of vines, along the meadows or along the roads since it is not bulky and easy to use. It is fitted with a 60 or 80 cm disc, a safety valve and an Oil recirculation system to prevent damage to the hydraulic motor during sudden increases of pressure.

**Connection required:** Multiconnector

Mod.	Code	Cut ø	Hammers	Min-max height of cut	Weight
Inter-row lawnmower	214100716	600 mm	2	30-100 mm	150 kg

SHREDDER



It is equipped with two reversible double-cutting tempered blades, the Neomach shredder works branches, twigs and cuttings. The centrifugal force gained from the rotor ejects from the discharge adjustable in height the finely chopped material and throws it about 3/5 meters away, allowing easy loading onto containers or trailers. The compact size makes them suitable to be used in narrow areas or terraces, besides the easy loading on small vans.

**Connection required:** Multiconnector

Mod.	Code	Cut capacity	Min-max flow	Min-max pressure	Weight
Shredder	214100711	90 mm	40-60 Lpm	200-250 Bar	200 kg

HEDGE CUTTER



Thanks to the telescopic arm and wide rotation angle precise vertical and horizontal cuts can be made. This makes the Neomach hedge cutter arm the ideal equipment for the keeping of fence hedges, along roads and gardens. The inclination of the cutting angle of the bar is electro-hydraulic and controlled from the driver’s seat.

**Connection required:** Multiconnector + additional double acting circuit 1 D.A.

Mod.	Code	Blade length	ø of branch	Angle	Max height horizontal cut	Weight
Hedge cutter 1500 mm	214100706	1500 mm	30 mm	225°	2300 mm	200 kg
Hedge cutter 2000 mm	214100710	2000 mm	30 mm	225°	2300 mm	250 kg

XL HEDGE CUTTER



Thanks to the long telescopic arm and large angle you can make vertical cuts and precise horizontal on fencing hedges, along roads and gardens. The inclination of the cutting angle of the bar is electro-hydraulic and controlled from the driver’s seat. The parallelogram arm can reach a cutting height up to 5 m tall.

**Connection required:** Multiconnector + additional double acting circuit 1 D.A.

Mod.	Code	Blade length	ø of branch	Angle	Max height horizontal cut	Weight
XL Hedge cutter 1500 mm	214100712	1500 mm	30 mm	225°	5000 mm	200 kg
XL Hedge cutter 2000 mm	214100713	2000 mm	30 mm	225°	5000 mm	250 kg

LEVELER



This tool is used to level and distribute evenly materials such as sand, gravel, mulch and ground. It is fitted with tubular sides, the Neomach leveler can be used in some cases for the lifting of construction materials and various tools.

Mod.	Code	Width	Height	Weight
Leveler	214020007	1200 mm	1400 mm	95 kg

DOZER BLADE



The Neomach dozer blade with hydraulic rotation is the perfect equipment for those who need to handle materials such as gravel, sand, earth etc. thanks to its strong design it is used for a rough leveling and finishing. This equipment is also useful in the construction field.

**Connection required:** Multiconnector

Mod.	Code	Width	Max inclination	Weight
Dozer blade 1600 mm	214100810	1600 mm	30°	102 kg
Dozer blade 2000 mm	214100811	2000 mm	30°	116 kg



AUGER W/ SOFT GROUND DRILLS



The Neomach auger is available with soft ground drill of several dimensions. In order to adapt to the different types of soil and the dimensions of the hole. It is equipped with hydraulic motor and is controllable directly from the joystick increasing or decreasing the turns at will. Torque 1100 Nm.

**Connection required:** Multiconnector

Mod.	Code	Weight
Auger w/ soft ground drills ø 150 x 1000 mm	214100301	65 kg (rotor)

Soft ground drills - Code	ø	Length	Weight
214100302	150 mm	1000 mm	
214100303	200 mm	1000 mm	
214100304	250 mm	1000 mm	
214100305	300 mm	1000 mm	
214100306	350 mm	1000 mm	
214100307	400 mm	1000 mm	
214100308	500 mm	1000 mm	

POT CLAMP



Mainly used in nurseries, the Neomach pot clamp is intended for lifting and handling of potted plants. The hold is adjustable according to the necessary force thanks to the proportional roller. In the version with rotation it is possible to rotate the clamp 45° both to the right and to the left in order to make it possible the gripping of the load even in the most difficult positions.

**Connection required:** Multiconnector + additional double acting circuit 1 D.A.

Mod.	Code	ø Max of the pot	Weight
Fixed pot clamp 1000 mm	214100814	1000 mm	122 kg
Fixed pot clamp 1300 mm	214100815	1300 mm	154 kg
Pot clamp w /rotation 1000 mm	214100813	1000 mm	147 kg

TIMBER FORKS W/ CLAMP



The Neomach timber forks with clamp allows the lifting and handling of single logs or small bundles of timber. It is equipped with a remarkable cylinder hydraulic that allows it to tighten heavier loads like stones or poles.

**Connection required:** Multiconnector

Mod.	Code	Max pot openness	Load capacity	Weight
Timber forks w/ clamp	214100010	850 mm	400 kg	92 kg

LOG GRAPPLE



It is equipped with rotor with 360 degree rotation, the Neomach log grapple grabs and handles timber moving the load also vertically thus making possible the transition in narrow spaces. As an optional the tree pusher is available as well for directing the fall of the stem when cutting, also equipped with a hook for ropes or chains to drag or move logs.

**Connection required:** Multiconnector + additional double acting 1 D. A.

Mod.	Code	Maximum clamp opening	Weight
Log grapple 1000 mm	214100601	1000 mm	195 kg
Log grapple1100 mm	214100604	1100 mm	215 kg
Log pusher	214100603		

STUMP GRINDER



It is the Ideal tool for completely removing in depth the strain remaining, the Neomach stump grinder is used for the maintenance of green areas. The sturdy protection of the disc shelters the operator from wood residues and at the same time prevents them a too wide dispersion.

**Connection required:** Multiconnector + additional double acting 1 D. A.

Mod.	Code	ø Blade	Weight
Stump grinder	214100602	490 mm	185 kg

GRAPPLE BUCKET



The Neomach grapple bucket is a tool suitable for loading, unloading and handling of crocks and/or construction waste and demolition waste materials, large stones and logs. The bucket is equipped with a hydraulic cylinder that allows keeping the grip tightly and safely.

**Connection required:** Multiconnector

Mod.	Code	Width	Weight
Grapple bucket	214100002	1100 mm	160 kg

MIXING BUCKET



The Neomach mixing bucket permits to load, to mix, to move and pour much more material in comparison to a conventional concrete mixer. Material discharge is placed at the bottom with hydraulic opening. It is mainly used in construction field and is very useful in areas without electricity where the use of concrete mixers would be impossible for some reasons.

**Connection required:** Multiconnector

Mod.	Code	Width	Depth	Height	Volume	Weight	Compatibility
Mixing bucket 100	214100403	1000 mm	700 mm	650 mm	100 lt	220 kg	Nova x30
Mixing bucket 150	214100401	1000 mm	850 mm	700 mm	150 lt	240 kg	Nova x40
Mixing bucket 200	214100409	1250 mm	850 mm	700 mm	200 lt	280 kg	Nova x40



DIGGER ARM W/ ROTATION



The Neomach digger arm is a tool used in construction areas, in environments and sometimes also in the agricultural sector. Thanks to the hydraulic rotation the excavation of materials will be easier, optimizing time and work productivity.

**Connection required:** Multiconnector + additional double acting 1 D. A.

Mod.	Code	Bucket	Digging depth	Weight
Digger arm w/ rotation	214100013	250 mm	1500 mm	120 kg

DIGGER ARM



It is used in different working environments such as small construction sites or garden centres and gardens, the Neomach digger arm is the perfect tool for small excavations. Thanks to its size it is suitable for access to the most uncomfortable workplaces.

**Connection required:** Multiconnector

Mod.	Code	Bucket	Digging depth	Weight
Digger arm	214100011	250 mm	1500 mm	110 kg

HYDRAULIC BREAKER



The Neomach hydraulic breaker is a fast and effective tool in its purpose: demolition and restoration of buildings. Thanks to its compactness in the dimensions permits the operator the access to narrow areas inside construction sites and tight spaces.

**Connection required:** Multiconnector

Mod.	Code	Impact	Impact rate	Tool ø	Weight
Hydraulic breaker	214100404	290 J	700-1000 bpm	45 mm	100 kg
Multipurpose coupling plate for compactor and stake installer	214100405				
Compactor tool	214100406				
Stake installer tool	214100407				
Wood breaker tool	214100408				

Notes: \_\_\_\_\_

\_\_\_\_\_

\_\_\_\_\_

\_\_\_\_\_

\_\_\_\_\_

\_\_\_\_\_

\_\_\_\_\_

\_\_\_\_\_

\_\_\_\_\_

\_\_\_\_\_

\_\_\_\_\_

\_\_\_\_\_

\_\_\_\_\_

\_\_\_\_\_

\_\_\_\_\_

\_\_\_\_\_

\_\_\_\_\_

\_\_\_\_\_

\_\_\_\_\_

\_\_\_\_\_

\_\_\_\_\_





Via Andrea Palladio, 16  
35010 San Giorgio in Bosco (PD) - Italy  
T. +39 049 7649134

[neomach.com](http://neomach.com)

